

Hopkinsons

...More than just another coach company



Day and Extended Tours **PLANNER 2013**



**OVER 800
TOURING IDEAS
INSIDE**



busnsw
Bus & Coach Association NSW



Phone: 1300 363 030 or (02) 9632 3344

www.hopkinsons.com.au



What's new in 2013

Impeccable 5 Star Luxury coaches, innovative customer focused charter team and itineraries that have been designed by our professional coach drivers make Hopkinsons...

MORE THAN “Just Another Coach Company”

Hopkinsons takes pleasure in presenting our 2013 planner. You will notice that we have amended day tours and the addition of several new extended tour ideas. You will also notice that we have added several new indexes.

We hope that this will assist you in choosing tours by regions and attractions allowing your group members, yourself and our charter team to identify the tours of interest and proceed with providing you with timely and efficient quotations and booking confirmations.

We would welcome your tour group co-ordinator to meet with Hopkinsons experienced charter officer, either at our office or elsewhere, to assist you in booking your group's tours for the year. (Did you know that we can attend your club/group meetings and present a DVD and also speak

about new tours and also how we help you group. It is a *FREE* Service). Call us on (02) 9632 3344 to find out more.

Our staff can go through each itinerary of interest and suggest options for lunch, venues and tailor the tour to suit your group's price range and specific needs. From our experience, booking well in advance is essential with many premium destinations, popular festivals and specific venues.

Our Coach Captains and Charter Customer Service team are dedicated to ensure that from the moment you call to enquire about a tour, to the moment you disembark from your tour, your experience with Hopkinsons is first class.

We will endeavour to meet all your touring requirements and would be appreciative of any feedback to improve our overall service.

We would like to extend our thanks for considering Hopkinsons for your next group charter tour.



**A family
owned
Australian
business**

Celebrating 35 years in operation

This year marks the 35th year since Hopkinsons began their passenger transport company. The Australian owned family business is now being operated by the second generation.

OUR BEGINNINGS

Graham and Thelma Hopkinson acquired Merrylands bus service in 1978 which was established by the Try family in 1923. The bus service was relocated to the Woodpark Road, Smithfield premises which we continue to operate from today. In total, the original bus service has clocked up 90 years of continual operation.

FOR THE LOVE OF COACHES

Originally a builder, Graham was bitten by the coach bug and, soon after purchasing the bus company, procured several coaches to add to his growing transport company. It was a labour of love for the couple; both had an affinity with travel and enjoyed bringing people together so, naturally, they established the Hoppies Touring Club. Subsequently the charter division grew from this and now includes an impressive fleet of five star coaches.

A FAMILY AFFAIR – SECOND GENERATION

Last year was a period of transition for the Hopkinsons family and staff after the passing of Graham Hopkinson.

His daughters Kaye, Jennifer, Julie and Michelle have stepped up into the management and operation of the Hopkinsons group of companies, with his youngest, Michelle, taking up the position of Managing Director. Speaking on behalf of her family, Michelle discusses the company's foundations. "Mum and Dad deliberately focused



Graham Hopkinson, wife and coach driver in the early days

on making long lasting relationships within their businesses securing dedicated and loyal staff, investing in quality vehicles and ensuring exacting standards in safety management systems. We believe that the culture, values and vision of Hopkinsons is driven from our parents' original passion and pioneer spirit which is central to Hopkinsons success story today."

THE HEART AND SOUL OF THE BUSINESS – OUR HOPKINSONS TEAM

We know that coach drivers are the heart and soul of our business. Hopkinsons drivers are well known for their courteousness, driving safety record and professionalism. We have a dedicated behind the scenes team including operations, mechanics and administration staff that are committed to ensure that you travel in first class comfort and that your travel expectations are met or exceeded.

PLANNING FOR THE FUTURE – OUR VALUED CUSTOMERS

Our focus remains on providing exceptional service and value for money to our customers. Over the past 12 months we have been listening closely to our customers feedback and hope our expanded 2013 tour brochure provides you with innovative and exciting touring ideas with an impressive range of options to meet all of your budget and travel requirements. Our charter team consultants will work collaboratively with you and are able to tailor any tour to meet your needs.

"We believe that the culture, values and vision of Hopkinsons is driven from our parents' original passion and pioneer spirit which is central to Hopkinsons success story today."

**SPECIAL
OFFER**

Travel with us for **FREE**

The best things in life are **FREE!** Hopkinsons are offering you the chance to travel on us. Simply follow the steps below for your chance to win. AND REMEMBER - on an Extended Tour, the **FULL** value of the tour is refunded to the **WINNER** of the raffle. Think of the spending money you will have on tour.

We also have gift certificates available for all of our tours. To purchase, please call (02) 9632 3344.

How it works:

- 1** Your group books a tour (Day or Extended Tour).
- 2** You have MORE than 40 travelling passengers for the raffle to be valid.
- 3** Each passenger will be handed a raffle ticket by your Coach Captain when boarding the coach.
- 4** The raffle is drawn at morning tea and the winner is announced.
- 5** A refund cheque is sent to the WINNER in the post after the tour.



ALL OF OUR TOURS ARE ONLINE AT www.hopkinsons.com.au

**REGISTER FOR FREE TODAY AND RECEIVE OUR
FREE EMAIL NEWSLETTER**

At your door, all year round

One of the good things about living in the greatest city in the world is all the **BIG** events are on our doorstep all year!! Hopkinsons is your Transport Partner. Choose from OVER 500 events. Visit www.sydney.com for a comprehensive list. Some of the events this year include:



Australia Day Celebrations
(various locations)

26 JANUARY



Open Air Cinema
(Mrs Macquarie's Chair Precinct)

10 JAN-16 FEB



Sydney International Rowing Regatta*,
(Penrith)

18-24 MARCH



The Addams Family
(Capitol Theatre, Haymarket)

10-21 MARCH



Opera on Sydney Harbour

23 MARCH



Bluesfest Byron Bay
(Tyagarah Tea Tree Farm)

28 MARCH-1 APRIL



British and Irish Lions Tour
(Various Venues)

5 JUNE- 6 JULY



Sun Herald City to Surf
(CBD to Bondi Beach)

11 AUGUST

Deniliquin Ute Muster,
(Deniliquin)

4-5 OCTOBER

Royal Navy Fleet Review

3-11 OCTOBER

Supercheap Bathurst 1000,
(Mount Panorama, NSW)

10-13 OCTOBER



Jack Newton Celebrity Classic
(Hunter Valley)

DECEMBER (TBC)



Canberra 100
(Various Venues)

JAN-DEC 2013



New Year's Eve
(Sydney Harbour)

31 DECEMBER

* (Hopkinsons are the Transport Sponsors for this exclusive event)

Sydney Coastal Regions

ABC Ultimo Tour	10
Bound for Balmain	10
The 'Cooks Tour' Bound for Botany Bay.....	10
NSW Mounted Police Headquarters.....	10
Harbour Highlights Guided Tour	11
Death or Liberty.....	11
David Parsons Concert.....	11
North to Palm Beach.....	11
Bahai Temple & Pittwater Tour.....	11
ANSTO Lucas Heights	12
Convicts Women's Trail	12
Bay to Breakers	12
Hungry Mile & Waterfront Style	12
La Perouse Museum	13
NRMA Careflight	13
Where the Waters Meet – Woolwich	13
Lifestyles of Leichhardt.....	13
Mansion of Strathfield	14
Picturesque Pittwater	14
Rose Seidler House	14
Newington Armory.....	14
Historic Sites Tour Selection	14
La Perouse & Bare Island.....	15
Revealing Randwick.....	15
Sweets of Gold & Hyde Park Barracks	15
Sydney Trams of Yesteryear.....	15
Middle Harbour Heights & Headlines	15
Victor Chang Institute	16
Powerhouse Museum & Doyles	16
Sydney's Famous Double Deckers	16
The Land of Pharaohs	16
State Theatre Tour	17
Ticket to Ryde.....	17
Westpac Life Saver Rescue.....	17

Sydney's Luna Park.....	17
South Side – Sea to City	18
Sydney's Time Capsule Rookwood	18
Bundeena and Underground History	18
Sydney Quarantine Station	18

Macarthur Country

A Dam Good Day.....	19
Belgenny Farm	19
Menangle Road Explorer.....	19
Fishers Ghost Explorer.....	19
Wollondilly Heritage Centre.....	20
A Botanical BBQ at Mount Annan	20
Picton Past & Present	20
Thirlmere Rail Heritage Centre.....	20
Camden Town.....	21
Wivenhoe Historic House	21
Historic Sites of Campbelltown	21
Gledswood Homestead.....	21
The Oaks Heritage Tour.....	22
Bushranging & Heritage Campbelltown	22

Nepean / Hawkesbury / Penrith Valley Regions

Alpacas & A Touch of Tuscany	23
Enniskillen Orchard – Fruit and Wine tour.....	23
Historic Fagan Park.....	23
Penrith Valley	23
Culture & Wine	23
Guide Dog Centre at Glossodia.....	24
Moving Mannequin Magic	24
Dural & Berowra Waters	24
Discovery Centre Castle Hill.....	24
Ebenezer & Historic Windsor.....	24

Table of Contents

In the Footsteps of the Masters	24
Gardens, Galleries & Sweets or Wine.....	25
Kurrajong Radio Museum.....	25
Historic Mamre Homestead.....	25
Parramatta Heritage	25
Hawkesbury Valley Heritage	25
Spring Blossom	25
Museum of Fire.....	26
Tobruk Sheep Station	26
Arts, Gardens & Orchards	26
Whispering Bones	26
Featherdale Wildlife Park.....	26
Waterview Restaurant British Comedies	26
Orchards & Australian Native Foods	27
Rouse Hill Estate	27
A Dam Good Day.....	27
Fire & Water	27
Early Settlement Estates the Olden Day Experience	27
Ebenezer & Tizzana Winery	27

Blue Mountains

Autumn Time in the Blue Mountains.....	28
Leuralla Toy & Railway Museum.....	28
Chapel on the Hill.....	28
When War Came to the Mountains	28
Bygone Beauties Treasured Teapots	29
Lithgow Heritage Tour	29
Leura Gardens Festival.....	29
Experience the Blue Mountains.....	29
Small Arms Museum.....	30
The Royal Tour	30
The 'Three Explorers' Journey	30
Zig Zag Railway.....	30
Mount Booralee Estate	30

A Day in the Blue Mountains	31
Mount Tomah Botanic Gardens	31
Everglades in Spring.....	31
Springtime in the Blue Mountains.....	31

Illawarra & Shoalhaven

City of Wollongong.....	32
Science Centre & Planetarium	32
Grand Pacific Drive	32
Industry World Port Kembla.....	32
Nan Tien Buddhist Temple	33
Black Diamond Heritage Centre.....	33
Historical Aircraft Restoration Society.....	33
Silo's Estate	33
HMAS Albatross	33
Illawarra Motoring Museum	34
Family History Centre – Kiama.....	34
Chocolates & Wine	34
The Cockatoo Run.....	34
A Right Royal & Restoration Day	34

Central Coast

Central Coast Tour.....	35
Broken Bay to The Entrance	35
Lakes & Leisure	35
Distillery Botanica	35
Patonga Beach Fish & Chips.....	36
Firescreek Fruit Wines & Gardens	36
Gosford a Day at the Races	36
Scenery & Greenery	36
Mt Penang Gardens	37
Henry Kendall Cottage	37
River Deep Mountain High	37

Southern Highlands

Illawarra Fly – Tree Top Walk.....	38
Fitzroy Falls	38
Joadja Creek – Heritage Tour	38
Highlands Heritage.....	38
Bundanoon is Brigadoon	39
Gardens & Wine	39
Bradman Museum and Bradman Oval	39
Tulip Time in the Highlands.....	39
Joadja Vineyard and Winery	40
Highlands and a Splash of Colour	40
English Villages of The Southern Highlands	40
Southern Highlands Circuit	40

Cruising the Water Ways

Hopkinsons Coaches & Captain Cook Cruise.....	41
The Nepean Belle & The Penrith Platypus	41
Cruise the Seven Islands.....	41
Palm Beach Fish & Chip Cruise.....	41
Brisbane Waters – Starship Cruises.....	41
Bingo on the Boat.....	42
Wangi Queen Showboat	42
Macquarie Princess	42
Port Hacking Scenic Cruises.....	42
Macquarie Princess Morning Tea Cruise	42
Aqua Queen – Cruising Sydney Harbour	42
Shoalhaven – Down River Cruise.....	43
Milk and Paper Run.....	43
Moonshadow Cruises	43
Australian Heritage Fleet Fish & Ships Tour.....	43
Shoalhaven Up River Cruise	43
Nepean Belle Lunch Cruise	43
Baywatch Cruises	44
The Hawkesbury Paddlewheel Lunch Cruise	44

Port Hacking Explorer II.....	44
Twilight Cruising aboard the Aqua Queen	44
Nepean Belle Morning Tea Cruise.....	44
Brisbane Waters Cruise – Codock II	45
Riverboat Postman	45
Church Point Ferry	45

Christmas in July & December

Burning Log Christmas in July.....	46
Hunter – Day in the Vines	46
Diggers at The Entrance	46
Manor House Winter Christmas	46
Harbour Night Lights Aboard the Aqua Queen ...	46
Australian Bush Christmas.....	46
Bush Christmas in Winter.....	47
Sydney Harbour Christmas in July.....	47
The Waterview Restaurant.....	47
Drovers Camp Luncheon	47
Starship Cruises Yuletide.....	48
Gabby’s at Berry	48
Winterfest is Wonderful at Aunt Molly’s	48
Christmas in July at Chapel Hill.....	48
Bush Christmas at Buttai Barn	48
Christmas in July On The Farm	48

Further A Field

Canberra’s Spring Festival	49
Wine in the Vines	49
Fighter World – Williamtown	49
Maitland Goal	49
Buttai Barn Colonial Day.....	49
Bradley Grange Brewery.....	49
Good Samaritan Donkey Sanctuary	50
Famous Newcastle Tram	50

Table of Contents

Historic Valley Shopping.....	50	Seven Day Lakes Entrance & High Country Tour.....	60
Hunter Valley Gardens	50	Four Day Hunter Valley Cessnock Tour.....	60
Jenolan Caves Imperial Tour	50	Five Day Eden Tour.....	61
Dobell House – Lake Macquarie.....	51	Nine Day Outback Broken Hill Tour	61
Lake Bathurst.....	51	15 Day Western Australia Tour	61
Rathmines – RAAF WWII Seaplane Base	51		
A Day on the Farm – Alpacas and sheep	51		
Berrima & Harpers Mansion	51		
Stroll down Morpeth Town	51		
Hunter Valley Tour.....	52		
Historic Wollombi	52		
Hunter Region Botanic Gardens	52		
Drovers Camp Luncheon	52		

Young, old and anywhere in between

Australian Reptile Park	53
Hole in One	53
Trainworks Choo Choo	53
Under the Sea	53
Sydney Olympic Park & Movie Day.....	54
Powerhouse Museum	54
WOW Look at that.....	54
Featherdale Wildlife	54
Control the Action.....	54
Let's Skate	55
Symbio Wildlife Park	55
Taronga Zoo	55
The Blue Mountains Experience	55
Luna Park.....	55

Extended Tours

Three Day Canberra Tour	60
Four Day Mudgee Bathurst Oberon Tour.....	60
Five Day Young Tour	60

The Extended tours listed above are just a few we have on offer.

Our tours range from one day to 22 days. All tours are fully flexible to meet requirements of groups and we also offer ample free time if you wish.

In the last year we have received lots of positive feedback and we have used this information to offer the next chapter of touring to you and your group.

From workplace incentive days to senior's getaways we are certain we have a tour to meet and exceed your expectations. Our database currently has over 70 Extended touring options to consider.

It is exciting to also offer in this edition an exclusive section for School Holiday Activities that are child-friendly and also suit parents and grandparents (*see pages 53-55*).

We look forward to assisting you this year and we thank you for your continued support.

Kind Regards,
Hopkinson's Charters Team

Phone us (02) 9632 3344

Fax: (02) 632 4402

Quotes: quotes@hopkinsons.com.au

Charters: charters@hopkinsons.com.au

Information: info@hopkinsons.com.au

Surrounded by one of the most spectacular harbours in the world, the City of Sydney is full of wonderful things to do and see. Whether it be cruising the waterways, visiting a museum and art gallery or just exploring, there is something for everyone to enjoy. The following suggestions are just an insight to tours available while out and about in the Sydney metropolitan area. Contact us for further information on tailoring a day tour personally for your group.

1 ABC ULTIMO TOUR - HOME OF AUSTRALIAN BROADCASTING

Travelling to Ultimo today for a guided tour that covers all aspects of the ABC national broadcasting, including television, radio, new media, news and current affairs. After a very informative tour, we then rejoin our waiting coach for lunch at Paddington RSL. In the afternoon, we enjoy a leisurely tour of the Eastern Suburbs of Bondi and Dover Heights to Watsons Bay, Rose Bay, Double Bay and the City to home.

2 BOUND FOR BALMAIN GUIDED TOUR *(Fees all inclusive)*



Venture into the heartland of Inner Sydney today to old Balmain. Enjoy the sights along the Pyrmont waterfront and see the transformation of the old wharves and industrial sites into parks, apartments, hotels

and pleasant Harbour front walkways. Travel through historic Glebe with a visit to the Sze Yup Temple. At Balmain waterfront, hear the tales of a long forgotten shipping era and its hardworking people. See the newly restored miners' cottages and a vast array of housing styles, historic buildings and how a colourful 'quality of life' has once again returned to Balmain. We then head to Ashfield RSL Club for lunch; our guide will then take us for a tour of Callan Park at Rozelle, nowadays the Sydney University's School of Arts.

3 THE 'COOKS TOUR' BOUND FOR BOTANY BAY GUIDED TOUR *(Fees all inclusive)*

Our guide joins us at Strathfield for the 'Cooks Tour' of Botany Bay. We venture on to the southern reaches of Botany Bay, to Australia's birthplace, Kurnell. Travel along Silver Beach, see the monument and rocks where Captain Cook was 'carried ashore' in 1770 and the memorial to Sir Joseph Banks, through Botany Bay National Park and onto the whale watching site, Endeavour Heights. Tour the beachfront suburb of Cronulla & visit the historic Bass & Flinders Lookout to take in the views of Port Hacking & the Royal National Park to Bundeena. We visit Botany Bay, we venture on through the newly created seaside suburb of Prince Henry at the Bay to see the ultra-luxurious dwellings and coastal views. Lunch today is a buffet at Gynea Bowling Club at own cost. After lunch, finish off the day's touring with a drive and commentary through the grounds of Sydney Uni's College of the Arts.



4 NSW MOUNTED POLICE HEADQUARTERS *(Tuesday and Thursday only. Maximum 35 Passengers.)*

Today we have morning tea at Sydney Park and have a tour of the NSW Mounted Police Headquarters; please bring a carrot. After an enjoyable morning tea, we have lunch at Paddington RSL Club with an afternoon visit to Vaucluse House prior to our leisurely journey home.

5 HARBOUR HIGHLIGHTS

GUIDED TOUR (*Fees all inclusive*)



Collect our guide and take in the city skyline and Sydney Harbour to Blues Point Park for morning tea. Continue touring to Cremorne, Mosman and Seaforth and hear the story of the early whaling

industry around Sydney's foreshores. See the sights of Manly and north to Freshwater and Curl Curl before stopping for lunch at Dee Why RSL Club. After lunch, we cross the Spit Bridge to beautiful Balmoral Beach before heading home.

6 "DEATH OR LIBERTY!" - IRISH REBELLION GUIDED TOUR

(*Fees all inclusive*)

Setting off today for a 'Past Times Tour' of all the relevant sites of the convict uprising known as the "Battle of Vinegar Hill", your guide will unfold the story of these, "Very Dangerous Members of Society". We visit the sites of Toongabbie and Castle Hill Government Farms where Irish Convicts worked in appalling conditions and plotting began. The Site of Catholic Church services on Gaol Green where plotting was said to continue, the "hanging tree" later used to great effect. See the Liberty Tree, planted here in memory of the convicts. Follow the progress of the uprising, the declaration of Martial Law and the extraordinary efforts of the soldiers to catch up with the rebels and quell the convicts. Travel along the Old Windsor Road to the site of the climax of the Battle of Vinegar Hill. Hear the story as we view the modern memorial. We hear of the resulting punishments – severe floggings, banishment and death. Explore this little known aspect of our history by visiting the relevant sites with a knowledgeable guide who will reveal the whole incredible story. Lunch today will be at Rosehill Bowling Club.

7 DAVID PARSON'S CONCERT

(*Must book 6 months in advance*)



Depart this morning to enjoy a concert by David Parson with morning tea at Cumberland State Forest before travelling to the home of David Parson

to be entertained with a wide variety of music on his 'Theatre Organ' and 'Grand Piano'. Lunch will be prepared and served by David's wife, Beverly, consisting of mixed sandwiches and homemade cakes and slices. Afterwards, rejoin the coach for the return journey home with a tour of the Green Hills District.

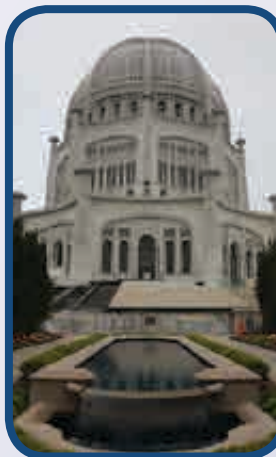
8 NORTH TO PALM BEACH

Morning tea at one of the many vantage points along the way. Then onto the most northerly point of the Sydney area, Palm Beach, to see the many mansions built into the side of the steep hills. Lunch today at Palm Beach available from the beach front or, if you prefer, the bistro at Palm Beach RSL Club. Our return journey takes us back along the beachfront areas of Whale Beach, Avalon and Narrabeen.



9 BAHAI TEMPLE & PITTWATER TOUR

Depart your pick-up point travelling to Terrey Hills to visit the Bahai Temple, constructed in 1961 which can accommodate up to 600 people, mainly as a meditation and prayer hall. Lunch will be at Pittwater RSL Club today. After lunch, tour along the beaches through Manly and then home.



10 ANSTO LUCAS HEIGHTS

Our destination is The Australian Nuclear Science & Technology Organisation based at Lucas Heights. Stop for morning tea before arriving at Lucas Heights for your tour. Starting with an audio-visual presentation, view the tandem accelerator and tour the Australian Radioisotopes used in the production of medicine. After your tour, lunch can be arranged at the Engadine RSL. Then we pay a visit to the E.G. Waterhouse Camellia Gardens overlooking Yowie Bay.

11 CONVICT WOMEN'S TRAIL GUIDED TOUR (*Fees all inclusive*)

Publicly branded as, "These most licentious women, the very dregs of society" we explore through their stories as if this was a true description and what their choices were in life. At their entry point to Parramatta, we hear of conditions on transport ships to the Colony and how the women were assigned to service. Those not immediately assigned were sent up the river to be incarcerated in the Female Factory or Convict Women's Gaol. We travel to the site of the first Female Factory and hear how it came about, and then a walk around the remnant buildings of the second Factory built 1818-1821. Begin to understand the appalling conditions under which they lived. Hear lively and interesting tales of their lives. Hear the types of crimes that earned women this harsh punishment. Understand the reasons for the officially sanctioned Marriage Fairs. Why did many women agree to marry men unknown to them? View two orphanages where their children were placed. What was the lifestyle of children inadvertently caught up in their mother's crimes? Also stories of the women, some of their masters and the factory builders in their final resting place, St John's Cemetery. Lunch will be between all these wonderful learning experiences at Rosehill Bowling Club.



12 BAY TO BREAKERS GUIDED TOUR (*Fees all inclusive*)

A delightful day out as we trace some of the history and development and observe the exquisite homes of the south eastern harbour side suburbs. Starting with morning tea at Rose Bay, then onto Vaucluse and The Gap Park at Watsons Bay. We follow the coastline south to the famous old Bondi Beach, where the first Surf Lifesaving Club was introduced and where 'not that long ago', beach inspectors carried a tape measure to measure bikini widths. Lunch today will be at Malabar RSL Club, once lunch is complete we then continue to travel further south along the coastline via Coogee and on to the Port of Botany Bay. We complete the day by visiting the inspiring Chapel-by-the-Sea at Prince Henry Hospital, Little Bay.

13 HUNGRY MILE & WATERFRONT STYLE GUIDED TOUR (*Fees all inclusive*)

After collecting our guide we travel to Pyrmont for morning tea before embarking on a tour along The Hungry Mile. Hear of the turbulent days on the waterfront, when the wharfies queued a 'mile long' in the hope of a few days' work for a few bob. This area is now modern apartments, theatres and cafes. See the controversial 'Barangaroo' site and we then travel through Millers Point to Dawes Point Park and also the Rocks. Lunch will be at Harry Café de Wheels or Rose Bay RSL. Vaucluse and South Head in the afternoon. BRING YOUR CAMERA!!



14 LA PEROUSE MUSEUM - BOTANY BAY NATIONAL PARK



Today we set out to explore the coastline around Botany Bay which is steeped in history. Our first stop is La Perouse for morning tea then a visit to the

La Perouse Museum, standing on the site of the first landfall of the British Fleet in January 1788, the museum has exhibitions on local and cultural history. Today we stop for lunch at Yarra Bay Bowling Club. Leaving La Perouse, we follow Botany Bay via Brighton-le-Sands, Monterey, Ramsgate, Sans Souci, Taren Point and Miranda. We complete our tour of Botany Bay travelling to Kurnell to Captain Cooks Landing Place.



15 NRMA CAREFLIGHT

After enjoying morning tea we travel to Northmead for a visit to the NRMA Careflight facility. Careflight operates one of the most advanced emergency helicopter and medical retrieval services in the world. Today we find out how this service operates with the opportunity to tour the hanger housing the helicopter that has assisted in saving many lives due to the quick service it can provide. After your tour we enjoy lunch at St Marys Band Club. After lunch, maybe a visit to the Sake Factory at Penrith for a tasting or Sweeties Confectionery Factory.

16 WHERE THE WATERS MEET – WOOLWICH GUIDED TOUR (*Fees all inclusive*)

Today we see the meeting point for the Lane Cove and Parramatta Rivers and Sydney Harbour. View the grand old sandstone mansions of the historic riverside suburbs of Woolwich and Hunters Hill with their beautiful

landscaped gardens. See the ghosts of a 'maritime' past with a stroll along the Sydney Harbour trust's waterfront park and new Maritime Village. This was created out of what was once a massive Army dry dock cut into the cliff face at Clarkes Point. See Kelly's Bush, hear the tale of the Old Clock Factory and take in the views from the historic 'Cow Paddock'. Lunch today at Ryde Eastwood Leagues Club, then sit back and relax as your guide takes you on a riverside roam to hear the history of Kissing Point, Looking Glass Bay and Gladesville.



17 LIFESTYLES OF LEICHHARDT GUIDED TOUR (*Fees all inclusive*)

Today our guide will entertain us with stories of days long ago, of the well-to-do, the convicts and the working classes that completed the rich tapestry of these early Sydney suburbs. Trace the lives of wealthy free settlers, the Johnstones and Annandale Estate and their involvement in shaping Sydney's history and heritage. After lunch, we tour around Hen and Chicken Bay to view the redeveloped suburbs of Concord, Kings Bay and Canada Bay that once played host to a large number of industrial sites. Lunch will be held at Ashfield RSL Club for an all you can eat buffet. We finish the afternoon in the delightful and historic harbourside park at Cabarita and stand beneath the original Pavilion where Australia's Federation Documents were signed.

18 MANSIONS OF STRATHFIELD GUIDED TOUR *(Fees all inclusive)*



“In a bygone era” and “Mt Royal” are all names associated with this attraction. Strathfield was associated with elegance and fine living and a number of well-to-do early Australians erected mansions

as their homes. A number of mansions have been maintained in true splendour, some nowadays being home to private and public schools, Santa Maria Del Monte, Santa Sabina, Albert House and wealthy suburb. Sit back and relax while your fully qualified guide takes you on an informative and interesting nostalgic tour of the Strathfield district.

19 PICTURESQUE PITTWATER GUIDED TOUR *(Fees all inclusive)*



Climb aboard today for a guided tour to the foreshores of picturesque and serene Pittwater. Morning tea at Roseville Chase then an optional stop at Flower Power, Terrey Hills before heading through the

Garrigal and Ku-ring-gai National Parks towards the shoreline at Mona Vale Beach. See the yacht clubs of Newport then travel to Salt Pan Cove and pretty Clareville and Avalon before heading south to beautiful Bayview and Church Point to take in the views across to Scotland Island. Lunch today is at Pittwater RSL Club. Then in the afternoon we take the coastal drive south, stopping at Turimetta Head to take in the views, then via Warriewood to home.

20 ROSE SEIDLER HOUSE

Today we visit the liveable, functional sculptural home of Rose Seidler. Harry Seidler built this house for his parents when they arrived in Australia from America in 1948. We enjoy morning tea in the grounds before having a tour and then free time to roam. We have lunch today at the Pittwater RSL Club then an afternoon drive through the artisans suburb of Church Point and Ku-ring-gai National Park.

21 NEWINGTON ARMORY GUIDED TOUR *(Fees all inclusive)*

This morning we travel to Homebush for morning tea before our tour of the Newington Armory.



We board the Heritage Train and enjoy an explosive trip around the historic Armory Buildings. Discover how the armaments such as bombs and bullets were stored, transported and protected at what was formerly known as RANAD or Royal Australian Navy Armament Depot. Lunch

today will be enjoyed at Rosehill Bowling Club for a Buffet. In the afternoon a visit can be made to Auburn Botanical Gardens.

22 HISTORIC SITES TOUR SELECTION (ELIZABETH BAY/VAUCLUSE/ GOVERNMENT & SUSANNAH PLACE MUSEUM, HYDE PARK BARRACKS)

Today we visit two historic sites; choose from Elizabeth Bay, Vaucluse, The Domain, The Rocks and Hyde Park. Your tour selections will be one before lunch and one after lunch. Buildings date from 1805-1860. Lunch venue depends on your site selections, either Malabar RSL or Doyles for fish and chips. We return home after the tours.

23 LA PEROUSE & BARE ISLAND

Today we set out to explore the coastline around Botany Bay which is steeped in history. We visit the La Perouse Museum which sits on the northern headland of Botany Bay adjacent to Bare Island Fort built in 1885 to protect the back door of Sydney from sea attack. Dramatic views extend east to the Pacific Ocean and south across the waters of Botany Bay towards Kurnell. Next we move on to Yarra Bay Sailing Club for lunch then afterwards we do the tour around to Kurnell for a visit to Captain Cook's Landing Place. We then make our way home.



24 REVEALING RANDWICK GUIDED TOUR *(Fees all inclusive)*

Today we venture east and start our day beside the sea for morning tea at Clovelly Beach Park. Back on board enjoy the commentary from our fully qualified guide as we travel to 'Royal Randwick' old Irish Struggletown and past the fascinating heritage listed Randwick City buildings. A stop at Dolphins Point Headland to see the Memorial to Bali, then we enjoy lunch at Malabar RSL Club or picnic at Coogee before visiting the oldest Anglican Church and Cemetery in the district, St Jude's before finishing the day with an overview of famous Centennial Park.

25 SWEETS OF GOLD & HYDE PARK BARRACKS

Travel to Sydney today to Dolci D'oro Sweets of Gold for our morning cuppa and a tasting of chocolates and confectionery, a one stop shop for all your gifts and confectionery. We then enjoy a Club lunch before travelling to Hyde Park Barracks. The Barracks housed convicts in Government Employment between 1819 and 1848 then it became a female Immigration Depot and Government Asylum for women. Find out how these occupants slept, ate, worked and dreamt. After spending time at the Museum we then start for home.

26 SYDNEY TRAMS OF YESTERYEAR

Join your Hopkinsons Coach at your group's departure point and travel to Loftus for a visit to the Tramway Museum.



First a cuppa in the Tramway Museum's park before exploring history including an inspection tour of the display hall, running shed and restoration building. Then catch the Tram along the former railway line into the Royal National Park and return. Lunch is at Engadine RSL Club today. After lunch, we travel via Gymea to Miranda for an afternoon stop at the E.G. Waterhouse Camellia gardens.

27 MIDDLE HARBOUR – HEIGHTS & HEADLANDS GUIDED TOUR *(Fees all inclusive)*

Today we enjoy spectacular Harbour and ocean views from the magnificent headland park of Georges Heights over our morning cuppa. See how the Sydney Harbour Federation Trust has conserved the Historic Army Base and parklands at Lower Georges Heights, now being used by an array of artists, sculptors and art schools. Travel through Sydney Harbour National Park to Chowder Bay Beachfront to see the former Submarine Mining Depot and Army Maritime School. Lunch today at North Sydney Leagues Club, then in the afternoon enjoy stunning scenery from the heights and headlands of Middle Harbour as you tour through the manicured garden suburbs of Middle Cove, Castle Cove and Roseville Chase. Also view from the coach the lovely Innisfallen Castle.

28 VICTOR CHANG INSTITUTE *(Must book 6 months in advance Tuesday- Thursday)*



Travel today to Darlinghurst for a tour of the Victor Chang Cardiac Research Institute. Being welcomed on arrival by your hosts with morning tea, they will explain the functions of the institute and the research they are conducting. Your tour will include touring the Laboratories and the Research Centre. We then travel to Petersham for lunch. After lunch we pay a visit to Fardoulis Chocolates for a chance to purchase nuts and chocolates direct from the manufacturer. Then it's homeward bound.

29 POWERHOUSE MUSEUM AND DOYLES



After departing from our pickup point, we have a quick morning tea stop before arriving at the Powerhouse Museum for a stroll around. The Museum's exhibitions span

history, science, technology, design, industry, decorative arts, music, transport and space explorations. After an interesting morning, we travel to Watsons Bay for lunch at Doyles for their famous fish and chips. Touring in the afternoon before arriving home.

30 SYDNEY'S FAMOUS DOUBLE DECKERS

Today we travel to Tempe to visit the Bus and Truck Museum. Enjoy morning tea on arrival, then 'step back in time' for a tour of our Heritage road transport. The exhibits range from an early 1924 'Ruggles' bus up to the modern state of the art 1970's Atlantean Double Decker. Also a display of trucks, the backbone of Australian industry can be seen. Enjoy the collection of artefacts and memorabilia which together completed the street scene of Sydney. After our tour we travel to the local club for lunch. We end our day enjoying the afternoon touring the sights with perhaps a stop at the local Nut and Chocolate Factory.



31 THE LAND OF PHARAOS – EGYPTIAN ROOM

After morning tea we arrive at the Royal Arch Temple. Step through the doors back in time into Ancient Egypt and the Land of the Pharaohs as your guide explains the fascinating insight into one man's relationship with the ancient Gods told through a series of scenes around the walls in a combination of brilliantly coloured vignettes, amazing columns and gold leaf (now under the Heritage Act). After experiencing the Egyptian Room we travel to Doyles for a fish and chips lunch. Then in the afternoon enjoy a tour of the area, perhaps the Southern Beaches or St Patrick's Underground Church, before returning back to your starting point.



32 STATE THEATRE TOUR

Enjoy a two hour tour of the State Theatre in Sydney which opened in 1929. During the tour of this unique building, you will discover why it's known as the 'Palace of Dreams'. Experience the grandeur of standing in a 2000 seat auditorium beautifully framed by 13 hand-cut crystal chandeliers. We then enjoy lunch at Harbord Diggers Club with afternoon touring along the coast.

33 TICKET TO RYDE GUIDED TOUR (Fees all inclusive)



Take a 'Ticket-to-Ryde' to one of Sydney's original townships. Morning tea at Kissing Point alongside the site of Sydney's first and famous Brewery. Visit the renowned and historic S Anne's Anglican Church, with magnificent stained glass windows and historic grave of Granny Smith of apple fame. Your guide will

take you through the Old Village of Ryde. See the heritage buildings including the beautifully restored Courthouse and Wesleyan Parson's residence. Be guided through the leafy peninsula suburb of Hunters Hill onto Woolwich to view the spot where the Lane Cove and Parramatta Rivers meet with the waters of Sydney Harbour.

34 WESTPAC LIFE SAVER RESCUE (20 Steps)

Travel to La Perouse this morning for a tour of the new Westpac Life Saver Rescue Helicopter Base. This is a state of the art, purpose built operational facility located 200 metres from



the coast. We also enjoy a video presentation and plenty of photo opportunities. After a great morning we have lunch at South Sydney Junior Rugby Leagues Club. Touring the coast in the afternoon taking in Coogee, Bondi and Watsons Bay.



35 SYDNEY'S LUNA PARK (Not available in School Holidays)

Travel into the City to visit Luna Park for a nostalgic visit behind that beaming face with over 70 years of history. Let your guide take you on a journey to the heart of Sydney's most treasured icon. Re-live the fun, explore attractions of Luna Parks past, including old-time rides. Discover the hub of the Sydney Harbour Bridge construction workshops that once existed on the site. Lunch will be at North Sydney Leagues Club. After lunch, a City Tour and a visit to Dolci Doro Chocolates.



36 SOUTH SIDE – SEA TO CITY

To Sydney today travelling to Dolci D'oro Sweets of Gold for our morning cuppa and a tasting of chocolates and confectionary. We then tour via Coogee, Bronte, Bondi and Dover Heights following the coastline to Watsons Bay for lunch at the well known Doyles on the Wharf for fish and chips. After lunch, we tour via Vaucluse, Rose Bay and Double Bay, then through the City across the Anzac Bridge heading for home with an afternoon stop along the way.

37 SYDNEY'S TIME CAPSULE ROOKWOOD GUIDED TOUR (Fees all inclusive)


Today we will join "The Friends of Rookwood" for a guided tour of Rookwood Cemetery's world class heritage areas. We stop for morning tea at the Garden of Remembrance with our guide. We then travel by Coach with full commentary by our guide through Rookwood, taking in the Catholic Mausoleum of the Resurrection, gravesites of Jack Long and Fred Daly, viewing the stained glass, leadlight doors on vaults and so much more. After our informative two hour tour, we travel to Rosehill for lunch. Afterwards, we follow the Parramatta Explorer Route before making our way home.

38 BUNDEENA AND UNDERGROUND HISTORY

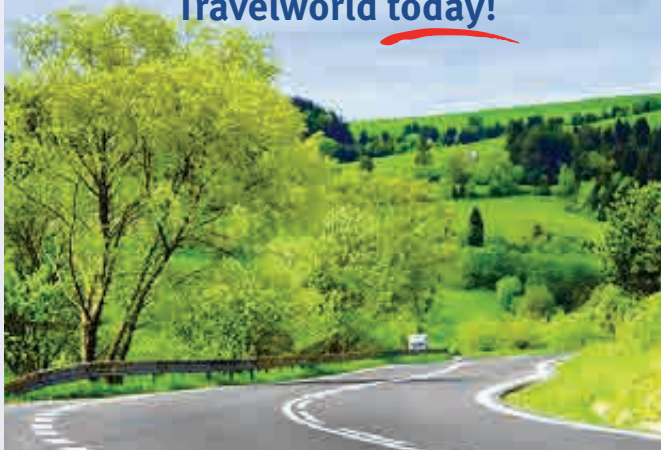
Today starts with morning tea on our way to Gunmatta Bay where you will board the ferry and enjoy a scenic cruise to Bundeena. For lunch we will be enjoying lunch at Bundeena RSL. Once you have enjoyed the club's facilities, we will head for the Underground Church for a look around prior to our journey home.

39 SYDNEY QUARANTINE STATION

Travel to Manly for morning tea, then onto the Sydney Quarantine Station to experience the serene natural surrounds and the day to day living experiences of our early quarantine guests. Hear how passengers were segregated according to their passenger ticket and compare their accommodation, food and freedom. Travel back in time and experience the process of quarantine which immigrants were subjected to from 1828 until 1984, listen to tales of the internees as you visit the historic buildings. After the tour, we travel back to Manly for lunch at Harbord Diggers Club. Then in the afternoon, we start for home leisurely touring along the way.



For your International and Domestic travelling options call Travelworld today!



Merrylands (02) 96821366

This region, on the south–western outskirts of Sydney, is surrounded by scenic and spectacular natural beauty stretching from Bargo in the south, Appin and Mount Hunter in the east, Warragamba to the north and the Nattai wilderness. The countryside is characterised by scenic hills and two river systems, with each town and village offering their own special history, style and country hospitality. Many scenic day tours can be arranged in this historic area. Let Hopkinsons introduce you to colonial mansions, historic sites and the rural charm of the region.



1 A DAM GOOD DAY

To Camden today for morning tea then onto via Werombi to Silverdale, the Village of Warragamba, a quiet retreat nestled by the side of Warragamba Dam, with quaint shops, houses

and narrow streets giving insight into life during the construction of the dam. After exploring the Village we then travel to Warragamba Dam for a fully catered sausage sizzle lunch or, if you like, a Club Lunch. Then we start for home via The Northern Road with a stop at Vicarys Winery for a tasting.

2 BELGENNY FARM - MACARTHUR COUNTRY TOUR

Travel to Belgenny Farm, morning tea in the grounds while getting to know your guide who will explain the morning's program. A guided tour of the historical Macarthur Property and watch sheep shearing with sheep dogs working the museum flock of Macarthur Merinos.

After your morning at the Birthplace of Australia's agriculture, Belgenny Farm, reboard the coach and travel via Menangle to Campbelltown for lunch at the Campbelltown Catholic Club. After lunch, rejoin the Coach for a tour of the Macarthur area before heading for home.



3 MENANGLE ROAD EXPLORER GUIDED TOUR *(Fees all inclusive)*

Depart from your pickup point and travel to Campbelltown to collect your Guide before having morning tea. Set off after morning tea to enjoy a fully guided tour into the colourful history of Menangle Road. Visit areas

of Glen Alpine, Menangle Park and the Village of Camden and learn the history of Quondong Cottage. Lunch today is at Campbelltown Catholic Club. After lunch we visit a local winery for a wine and cheese tasting before making our way home.



4 FISHERS GHOST EXPLORER & CAMPBELLTOWN GHOST & GHOUL GUIDED TOUR *(Fees all inclusive)*

An entertaining day awaits starting with morning tea at Koshigaya Park before setting off with your guide for the morning travelling into the history of one of the region's most well known legends. Visit some of the region's early colonial buildings and hear tales of Fishers Ghost, colonial scandals, haunted houses and more. Lunch today at Camden Valley Inn then, in the afternoon, be transported around locations of mystery and intrigue. Hear tales of Bushranger Mad Dog Morgan, ghostly apparitions, supernatural occurrences, colonial murders and more.

5 WOLLONDILLY HERITAGE CENTRE

Travel to the Oaks to visit the Wollondilly Heritage Centre. Morning tea on arrival of home cooked



slices and scones, then a brief video as an introduction followed by the friendly guides who will show you around the complex while you hear the local history of the Wollondilly Shire. Then into Picton Bowling Club for lunch and a tour of the historic sites before travelling home.

6 A BOTANICAL BBQ DAY AT MT ANNAN

Travel to Mt Annan Botanic Gardens today. Morning tea on arrival, then our guide will join us for a driving tour of the theme gardens including the



Bottlebrush Garden, Wattle Garden and Banksia Garden to name a few. Stay for a fully catered sausage sizzle lunch in the grounds or, if you prefer, bring your own picnic. Leaving the Botanic Gardens our next

stop is the new Flower Power Garden Centre for a chance to take in the extensive range of plants and arts and crafts available for purchase. After a botanical day, we then start the journey home.

7 PICTON PAST & PRESENT GUIDED TOUR (*Fees all inclusive*)

Today we hear the early history and the present developments in and around the sleepy town of Picton. We travel via the Antill home (founder of Picton) and of his descendants. Hear the story of the railway to Picton and beyond, view the historic station and the Stonequarry Viaduct, via Picton to view the famous Tollgate Cottage and hear the story of the Great South Road. On to Tahmoor, view Tahmoor House and Denfield Villa, to Bargo for the story of the convict explorer John Wilson, view the monument. Onto Couridjah and the Old Loop Line railway and Thirlmere, the historic timber town. Lunch today will be at Picton Bowling Club before travelling back to Camden via Orangeville.



8 THIRLMERE RAIL HERITAGE CENTRE

Travel today to the Thirlmere Rail Heritage Centre, home of the Rail Heritage of NSW. Be greeted on arrival with morning tea before stepping back in time to an era when everybody travelled by train. A fully guided tour of Australia's largest and oldest Railway museum, with over 125 exhibits representing the development of the NSW railways from the late 1800's. After your tour, enjoy a fully catered sausage sizzle in the undercover picnic facilities or Picton Bowling Club. Then rejoin your waiting coach and travel over the Razorback Range via Camden to Narellan for a visit perhaps to Lollieland.

9 CAMDEN TOWN GUIDED TOUR (*Fees all inclusive*)

Our guided tour begins travelling through Camden to the Carrington Retirement Villages. Hear the history of the old hospital and villages. On to Brownlow Hill, the Alexander Macleay and the Downe's home. Next, visit Cobbitty to view St Paul's Church and Heber Chapel. Onto Wivenhoe to view Sir Charles Cowper House, the Roman Catholic chapel and orphanage. Lunch will be at the Campbelltown Catholic Club. In the afternoon view the magnificent Camelot, then onto Oxley's stables and Kirkham Lane monument.



10 WIVENHOE HISTORIC HOUSE

Morning tea in Camden today before we enjoy a guided tour of the Wivenhoe Mediterranean style villa. This beautiful home is of State and National heritage significance and is the only extant example of a bell cast roof that was

carved from a single beam. Wivenhoe is situated on part of the original grant of land made to the Cowper Family by Governor Macquarie in 1812. We then travel via Silverdale to Warragamba Workers Club for lunch. An afternoon stop at Cobbitty Winery or Ambrosia Olives before returning home.

11 HISTORIC SITES OF CAMPBELLTOWN GUIDED TOUR (*Fees all inclusive*)

Set off after morning tea to see and hear how the settlement of Campbelltown was based around three churches visiting St Johns Anglican Church, the first Presbyterian Church and St John of the Gospel Roman Catholic Church. Visit also Fishers Creek Ghost, The Toll Gate Cottage (Emily's Cottage) and Campbelltown Theatre (the old Temperance Hall), modern Glen Alpine an old pioneer property, Menangle for the story of the Macarthur Rotolactor, the St James Anglican Church and the old store and bakery, 'Gibulla', a Macarthur built house at the turn of the century. Visit the old shop at Menangle, now an antique Centre. Then via Menangle Park to view the 1870 Horse and Jockey Inn. After lunch, visit Quondong School and chapel museum, then to Blair Athol an 1890's mansion and 'The Kraal'.



12 GLEDSWOOD HOMESTEAD - WILD COLONIAL DAY

To Gledswood Homestead today. Enjoy morning tea on arrival and then re-live history with a guided tour through magnificent Gledswood Homestead and formal Colonial Gardens. Hear tales of colourful characters such as squatters, rum traders, wool merchants and convicts. Sample some of Gledswood's wines and ports in the historical Coach House, with perhaps a purchase at the cellar door. A country style roast will then be served in the Country Eating house. Experience the sights and smells of the historic shearing shed and the skilful hand of the shearer, hear a talk on the sheep industry in Australia and then watch the dogs round up sheep. (*Not Available Monday & Tuesday*)

13 THE OAKS HERITAGE TOUR GUIDED TOUR *(Fees all inclusive)*



Our guide for the day joins us for our morning cuppa. Tour today through Mt Hunter and The Oaks. Visit St Matthews, the oldest slab-built Anglican Church still in use in Australia. While viewing the Church, hear stories of the people, the Church and Cemetery. Touring then via Oakdale, find out the story of the valley from past to present. We visit the Roman Catholic complex at the Oaks, hear the history of each of the four buildings and the people. Then to the historic village of Glenmore to hear the history of the Moore family, the buildings, Church and school.

14 BUSHRANGING & HERITAGE CAMPBELLTOWN, GUIDED TOUR *(Fees all inclusive)*

Travel to Campbelltown today for morning tea, then a visit to the Campbelltown Visitors Centre where we collect our guide for a unique two hour commentary tour on Campbelltown's colourful past. Learn about the gallows, gaol and early colonial punishments. Hear tales of the iron gang who built Campbelltown's reservoir, bold explorers, brave heroes, bushrangers, pioneering men and women and much more. Lunch at the Club. Afterwards, experience a wine tasting before heading for home.

***Don't see a
tour you are
interested in?***

NO PROBLEM...

***Build your own OR we can
build it for you!!***

We have over 70 Extended
Tours to choose from, with
additional add-ons and
FREE time available.

We can mix and match
itineraries to suit your
specific requirements.

See pages 58-59 for
more details or call us on
(02) 9632 3344 today to
receive your complimentary
information sheet.

Hopkinsons

Open spaces, rural scenery, a stunning river and a spectacular gorge with history, culture and entertainment, the Nepean Region and Hawkesbury area have much to offer for a wonderful day of touring. There are many tourist drives in this area our experienced Coach Captains can take you on, their commentary bringing alive its past and enhancing its future. The following list gives some idea of the attractions that can be included in day tours to this fascinating area.



1 ALPACAS & A TOUCH OF TUSCANY

Today we travel to Tennyson to Tanglin Lodge Alpaca Farm, being welcomed on arrival by our host for the morning tea of homemade scones, tea and coffee. Enjoy finding out how an Alpaca farm operates.

See the animals and wander through the shop filled with Alpaca products. Leaving Tanglin Lodge, we enjoy touring the area before lunch at Club Richmond. Then in the afternoon we visit Tizzana Winery on the banks of the Hawkesbury River to taste the local wine and Olive Branch Products.

2 ENNISKILLEN ORCHARD - FRUIT & WINE TOUR



Today we travel into the picturesque Grose Valley for a visit to Enniskillen Orchard. Our hosts for the morning will welcome us on arrival with morning tea on the verandah. The Maguire family has been

running the property for 45 years and are happy to encourage you to take part in and savour Enniskillen Orchard's offerings. After morning tea, sample the local fruit which you can purchase, tour the herb garden or simply take in the view. Leaving the Grose Valley we then travel to Club Richmond. Then we visit Tizzana Winery on the banks of the Hawkesbury River to taste the local wine and Olive Branch Products.

3 HISTORIC FAGAN PARK

Travel this morning to the Cumberland State Forest for our morning tea stop, take a look around before we depart and head to our next stop. We then



travel to Fagan Park, a 55ha multi-purpose recreation area created on what were once the largest citrus orchards in the southern hemisphere. A fully catered sausage sizzle

lunch will be waiting for us on arrival. Our coach will take us on a self-guided tour of the grounds. The Gardens of Many Nations, a 10ha bicentennial project, has within it garden styles of Holland, England, Africa, Japan, China and the Americas. Leaving Fagan Park we stop at Cumberland State Forest for a browse through the visitors centre and also the native nursery.

4 PENRITH VALLEY

Travel to Springwood for morning tea then follow Springwood Road to the Hawkesbury lookout to take in the views of the Penrith Valley below. Travel on via Richmond and Agnes Banks around the Penrith Lakes Scheme arriving at Penrith RSL for lunch. Then in the afternoon we pay a visit to the Sake Factory and then Sweeties Confectionery.

5 CULTURE & WINE

Today we head out west to have morning tea at Tench Reserve along the Nepean River. We then visit Penrith Regional Gallery and The Lewers Bequest which is a unique and idyllic spot nestled on the banks of the Nepean River. We have either a buffet or two course lunch at Penrith RSL Club today. An afternoon visit to the Sake Factory or Sweeties Confectionery before returning home.

6 GUIDE DOG CENTRE AT GLOSSODIA (Must book 6 months in advance)



Today we visit the Guide Dog facility now at Glossodia for an entertaining and informative talk on the role of guide dogs. See the puppies, watch a video and learn how the dogs are trained for the

vision impaired and also as pets as therapy. After your tour, travel to Club Richmond for lunch. In the afternoon enjoy a tour of the area before heading for home. *(Wednesday Only)*

7 MOVING MANNEQUIN MAGIC

Today we head to Oakville to Mannequin Magic for a fun filled tour of robotic shows and skits stopping for morning tea on the way. Lunch today will be at The Richmond Club then after enjoying the club's facilities, we tour the vineyard for a visit to Divine Cakes and Biscuits for afternoon tea.

8 DURAL & BEROWRA WATERS - THE PINES - ROUGHLY HOUSE



Our first visit today is the historic property The Pines and Roughly House at Dural. Morning tea will be served on arrival before our

guided tour of the grounds and the historic house. We will hear the colonial history of Australia across 200 years as seen through the life experiences of one family, the Roughleys. After a very informative visit, we travel to Berowra Waters for lunch at the Fish Café. After lunch we will stop at Flower Power in Glenhaven with the opportunity to pamper your garden with Gifts of Love.

9 DISCOVERY CENTRE CASTLE HILL

Our first stop today is Cumberland State Forest for morning tea and a chance to visit the information centre and plant sale area. Travel to Berowra Waters for lunch at the Fish Café then to Castle Hill to the newly opened Powerhouse Discovery Centre for a fully guided tour among the incredible range of objects they have stored. From tin toys to double-decker buses, there are fascinating objects large and small, from the areas of decorative arts, design, science, technology, Indigenous culture and Australian history. Some are associated directly with the history of Castle Hill, the Baulkham Hills Shire and the northwest Sydney area. *(Not available Mondays)*

10 EBENEZER & HISTORIC WINDSOR

Depart your chosen pick-up point and travel via Wilberforce to Ebenezer Uniting Church built in 1809, set in a colonial churchyard amongst historic buildings including the schoolmaster's



house and a pioneer cemetery. Morning tea on arrival with your hosts before touring the Church and grounds. Rejoin the coach and travel to Club Richmond for lunch and then enjoy a tour of the surrounding area.

11 IN THE FOOTSTEPS OF THE MASTERS GUIDED TOUR *(Fees all inclusive)*

Depart your chosen pick-up for a delightful tour of the Hawkesbury Valley Painting Sites of famous painters; Arthur Streeton, Julian Ashton, Charles Condor, Sydney Ure-Smith, Joseph Lycett, James Wallis and local living artists. Our day starts at the Macquarie Town of Windsor where we meet your guide for the day, morning tea to be enjoyed at the park before embarking on your Hawkesbury Heritage Discovery Tour. Visit the old Hawkesbury Agricultural College now known as UWS-Hawkesbury and dine in the 1894 Principal's residence known as Yarramundi House. Tour the rich farmlands and Kurrajong Village for spectacular panoramic views of the Hawkesbury Valley and Cumberland Plain.



12 GARDENS, GALLERIES & SWEETS OR WINE

Today we visit Penrith Regional Gallery and Lewers Bequest. This delightful gallery, set amongst one of the best cottage

gardens in the area, features three galleries with exhibitions of both local and regional art. After morning tea and tour, we travel to the Sweeties Confectionery Factory Company to have a walk around and stock up on lollies for the grandkids. After lunch at Penrith RSL, we can visit one of the many venues available in Penrith perhaps to Australia's one and only Sake Brewery to learn about the tradition, culture and production process of this 2000 year old drink. You can taste and buy the sake products made from Australian rice.

13 KURRAJONG RADIO MUSEUM



Travel to Kurrajong Hills this morning for a nostalgic trip through the golden years of radio. Be greeted on arrival, enjoy morning tea with your hosts for the morning before a fully guided

tour of this light and alive museum. Then try your hand at sending morse code, see the 800kg ship's radio station with a very dark past, listen to Australia at work and play on shortwave. Leaving the Radio Museum, we travel to Club Richmond for lunch. Then in the afternoon we tour the area travelling via Wilberforce to Ebenezer Uniting Church built in 1809 set in a colonial churchyard amongst historic buildings including the schoolmaster's house and a pioneer cemetery.

14 HISTORIC MAMRE HOMESTEAD

Travel to St Marys for a visit to this Historic Georgian-style homestead, enjoy devonshire tea on arrival then a guided tour on the intriguing history of Mamre Homestead and the Reverend Samuel Marsden. Re-joining the coach, we then travel to St Marys Band Club. In the afternoon, we travel to the Sake Brewery to learn about tradition and culture of this 2000 year old drink. Afterwards we return to our pick-up point.

15 PARRAMATTA HERITAGE TOUR

Starting today we head to Parramatta Lake for morning tea. Enjoying a guided tour of St Patricks Cathedral before having a buffet lunch at Rosehill Bowling Club. After lunch we collect our guide for the afternoon and then visit several historic sites of Parramatta.



16 HAWKESBURY VALLEY HERITAGE TOUR GUIDED TOUR (Fees all inclusive)

Travel to Windsor for morning tea and a chance to get to

know our guide for the day. Then we set off to hear tales of the early settlers of the area viewing some of the many historic attractions of the area, see Francis Greenway's masterpiece, St Mathews Anglican Church (internal) and Windsor Courthouse (external), the oldest Catholic Church and School on the mainland (external), Australia's oldest Church at Ebenezer (internal), Macquarie schoolhouse (optional internal), Macquarie Arms Hotel hearing the history of the hotel. We then travel to Club Richmond for lunch. Then we visit St Johns Church Wilberforce, John Tebutt's Observatory (external), The Hawkesbury Settlement, 'Wandin Valley' TV sites, Richmond RAAF Base (external) and many other historic sites.

17 SPRING BLOSSOM

To Cumberland State Forest today for morning tea amongst the gum trees. You can walk along the sensor trail, visit the Information Centre that displays and sells forest products such as honey, timber bowls and books, there is also a retail nursery with lots of Australian Natives. We then pay a visit to Swanes Nursery, famous for roses and a chance to wander through the extensive range of plants available for purchase. Lunch today at the Fish Café, Berowra Waters. After lunch we have a leisurely tour home to our pick-up point.





18 MUSEUM OF FIRE

Today we visit the Museum of Fire for a guided tour exploring the drama and danger of fire and fire fighting. See vintage fire engines including 'Big Ben'

an 1891 steam fire engine made in London. Enjoy a theatre screening and video displays during your tour. A club lunch today at Penrith RSL, then tour the area in the afternoon with perhaps a visit to the Regatta Centre or Sweeties Confectionery.

19 TOBRUK SHEEP STATION

Travel to 'Tobruk Australian Merino Sheep Station' at Maroota. On arrival, Billy Tea and damper with golden syrup will be served at the Drovers



Camp overlooking the property with panoramic views of the Blue Mountains, followed by demonstrations of sheep shearing a wool room tour and mustering with Australian Kelpies. Enjoy a true Aussie BBQ lunch prepared by your hosts at Tobruk before joining in the afternoon activities of whip cracking and boomerang throwing. After a full day at the Station, it's time to start the leisurely journey home.



20 ARTS, GARDENS & ORCHARDS

Today we travel to the Hawkesbury District to the historic village of Kurrajong to a visit to Sassafras Creek

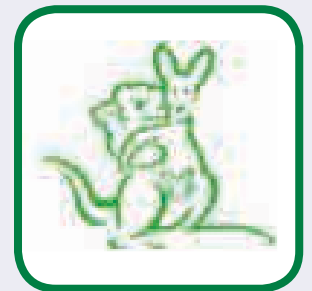
Gallery and Store; morning tea will be here. Leaving Kurrajong behind, we travel down Bells Line of Road to Panthers Richmond for lunch. After lunch we visit a local orchard specialising in fresh fruit and vegetables. Next we travel to Hawkesbury Earth and Care Centre for an inspection of this friendly cottage and step into Piggery Lane Studios and the Community Art Gallery before heading home.

21 WHISPERING BONES (GHOST & GOTHIC) GUIDED TOUR *(Fees all inclusive)*

After departing our pick-up point, we travel to Parramatta where we will have morning tea, meet our guide and tour the Parramatta City Region for tales of strange happenings. Lunch today will be at Rosehill Bowling Club. After lunch, we will visit Crystal Candies for the sweet tooth. We then head for home.

22 FEATHERDALE WILDLIFE PARK

We depart your pick-up point and go to Blacktown to visit Australia's unique wildlife in the bush setting. We have morning tea along the way or on arrival. See the croc encounter at 10.15am and pelican feeding at 11.00am. Lunch is at the Seven Hills RSL Club before heading to Parramatta for a tour of this city district, Elizabeth Farm, Hambledon Cottage and St Patricks Cathedral before finding our way home.



23 WATERVIEW RESTAURANT PRESENTS BRITISH COMEDIES

Depart your chosen pick-up point and travel to Galston for a visit to Fagan Park. Containing The Gardens of Many Nations, a 10ha bicentennial project, has within it gardens in the styles of Holland, England, Africa, Japan, China and the Americas. Stay for morning tea in the grounds and a look around. We then travel on to Berowra Waters and the Waterview Restaurant to be welcomed by our hosts for a themed British Comedies Luncheon, including soft drinks and wine. The themed lunches will have décor and a menu to match the theme. The tables will be set positioned to enjoy the show while eating. After an entertaining lunch, we rejoin our coach for a leisurely journey home.

25 ORCHARDS & AUSTRALIAN NATIVE FOODS

Depart your chosen pick-up point and travel into the Grose Valley and visit the Enniskillen Orchard where, on arrival we have morning tea and the opportunity to taste local produce and herbs. After tasting, we head to Club Richmond for lunch. With full bellies, we leave lunch and travel to Kurrajong Australian Native Foods featuring Australian fruits, nuts, herbs and spices from every corner, make our purchases and make our way home.



26 ROUSE HILL ESTATE

Travel to Rouse Hill Estate for morning tea in the grounds then your guide will join you for your tour of the Estate. Peek inside the Georgian house, and discover remains of one of the earliest gardens in Australia, the stables, woolshed and outbuildings. After your tour, travel to St Mary's Band Club for lunch. In the afternoon we tour the Penrith Lakes Scheme and also via the Sydney International Regatta Centre for a look at the rowing site.

27 A DAM GOOD DAY



Travel to Burragorang Lookout for morning tea then continue via Silverdale to Warragamba. Warragamba is one of the largest domestic water supply dams in Australia. Wollondilly

and Cox's River systems cover over 9000 square kilometres of water supply being equal TO four times Sydney Harbour. After visiting the Visitors Centre we can have lunch at Warragamba Workers or a BBQ in the picnic grounds. After lunch we can visit Blue Sweeties Confectionery at Penrith before returning home.

28 FIRE & WATER

Depart your pick-up point today and have morning tea along the banks of the Nepean River. We then move on to the Fire Museum for a theatre screening and video displays before a guided tour of the Museum. After an interesting morning we enjoy lunch at Penrith RSL Club (buffet or two course). After lunch, we visit Warragamba Dam, one of the largest domestic water supply dams in the world.



29 EARLY SETTLEMENT ESTATES THE OLDEN DAY EXPERIENCE

Today is a day of the past. After collecting you from your chosen pick-up point we travel back to the early settlement days starting with Elizabeth Farm where you can wander through the old house and gardens. Lunch today will be served at the Mean Fiddler with old fashioned service. After lunch you will enjoy a tour of the estate's house.



30 EBENEZER & TIZZANA WINERY

Depart your pick-up point and travel to Windsor for morning tea in Macquarie Park. Then travel via Wilberforce to Ebenezer Uniting Church, built in 1809 amongst historic buildings and Pioneer Cemetery. After touring we travel to the Mean Fiddler at Rouse Hill for lunch then afterwards to Tizzana Winery for tasting local wines and olive branch products.

travelworld

Book your dream holiday.
Give Travelworld a call today!

Merrylands (02) 96821366

The towns and villages that make up the City of the Blue Mountains feature many historic buildings, magnificent gardens and charming guest houses and hotels. There are sheer cliffs, panoramic lookouts, cool ferny glens and beautiful forest areas. For the daring, ride the scenic railway or just enjoy the wonderful gardens the Blue Mountains have to offer. The following list gives some idea of the attractions available so start planning and call us now.



1 AUTUMN TIME IN THE BLUE MOUNTAINS

Travel today to see the autumn colours of the Blue Mountains. Morning tea at the Wentworth Falls National Park to take in the panoramic views of the valley from the

lookout, which is right where the coach pulls in. Then follow Cliff Drive to take in the autumn colours from the comfort of the coach into Katoomba Golf Club for lunch. Then on via Mt Victoria and The Bells Line of Road to Bilpin for an afternoon stop at the Fruit Bowl.

2 LEURALLA TOY & RAILWAY MUSEUM



Today we visit the showplace of the mountains 'Leuralla' N.S.W. Toy and Railway Museum. Features of the house are the extensive carved and polished wood panelling, the fine collection of

paintings and photographs, the museum of toys, together with the formidable collection of 1920's – 50's clockwork, electric and steam model trains, stations and figures. Set in 12 acres of beautiful mountain gardens, enjoy the extensive views of the Jamieson Valley. Then into Katoomba Golf Club for lunch. Afterwards we begin the return journey back down the mountain travelling via Lawson, Faulconbridge and Penrith, stopping at Penrith lakes for an afternoon stop.

3 CHAPEL ON THE HILL

Travel to Richmond for morning tea at Ham Common opposite the RAAF Base. Then we venture on to Berambing for a guided tour of the Chapel on the Hill and Gardens of Peace and take in the glorious



views from the Chapel across the Blue Mountains. A replica of an early Australian Country Church, this non-denominational Chapel is set on five acres of tranquil gardens and features a floor to ceiling window made of thousands

of squares of hand-cut coloured glass forming a shimmering curtain of stained glass. Stay for a two-course luncheon with entertainment, then we make our way to Bilpin for a visit to the Fruit Bowl for an afternoon stop before heading home.

4 WHEN WAR CAME TO THE MOUNTAINS GUIDED TOUR (Fees all inclusive)

Travel to Glenbrook for morning tea. Our guide joins us to tell us of the impact World War I and II had on the Blue Mountains. Hear stories of farewell banquets, a phantom 1914 German invasion, recruitment marches, obscure monuments, the visiting children, POW's, a Carrington Gallipoli veteran, those visiting Americans and more. Lunch today at Katoomba Golf Club, with your guided tour continuing in the afternoon.

5 BYGONE BEAUTYS TREASURED TEAPOTS

Our first stop today is Leura for a visit to Bygone Beauties Treasured Teapots. Enjoy an informative, witty and entertaining talk by your hosts on the history and diversity of tea drinking through the centuries. Morning tea will be served during our talk, in the comfort of the tearoom which has central heating, then browse the world's largest private teapot collection. Leaving Leura we travel along the picturesque Cliff Drive to Katoomba for lunch at the Katoomba Golf Club. After lunch, we take in the sights of the Blue Mountains travelling to Blackheath for an afternoon stop at Memorial Park.



6 LITHGOW HERITAGE TOUR

To Lithgow for morning tea and a visit to Hoskin's Uniting Church, built in memory of Guildford Hoskins, the surrounding garden being one of the finest in Lithgow. Onto Esbank House, a Georgian style sandstone building which offers a great introduction to Lithgow's history. There is also the 'Possum', a steam locomotive, displayed in the grounds. Then its time for lunch at Lithgow Workers before visiting Blast Furnace Park part of Lithgow's rich industrial History. The site has been developed as a park around the remains of the pump house and foundations of the former Blast Furnace.

7 LEURA GARDENS FESTIVAL - (Early October 2012 to be confirmed)



Our first stop with morning tea at Glenbrook, then into Leura to take in the festival events. Our next stop will be the plant sale area adjacent to Leura Golf Course for those that cannot resist buying another plant. Then we visit one of the open gardens before following Cliff Drive into Katoomba Golf Club for lunch. Then enjoy the

colours of the Blue Mountain gardens from the comfort of the Coach before our final visit to our second well known open garden in the area.

8 EXPERIENCE THE BLUE MOUNTAINS

Our first stop today is Wentworth Falls National Park for morning tea. Then on to Katoomba for a visit to Scenic World. Firstly a chance to take in the breathtaking views of the Three Sisters and the Valley below before experiencing the



steepest aerial cable car in Australia, the Scenicender, taking you on a 545 metre ride into the World Heritage listed rainforest of the Jamison Valley. Enjoy the Rainforest Boardwalk to the Scenic Railway Platform for a return rail ride to the top. After experiencing

Scenic World, we travel to Katoomba Golf Club for lunch. Then after lunch we pay a visit to Leura to take in this National Trust listed Village with perhaps a visit to the Candy Store.

9 SMALL ARMS MUSEUM – LITHGOW

Travel along the Bells Line of Road to Richmond for morning tea, then onto Lithgow arriving at the Small Arms Museum for a guided tour of the military



exhibition and also the commercial products once produced, such as sewing machines and more. Lunch today is at Lithgow Workers Club. After lunch we sit back and enjoy a coach tour of Historic Lithgow with a stop at Blast Furnace Park.

10 THE ROYAL TOUR - RETURN TO AN ERA OF GRACE, ELEGANCE AND CHARM GUIDED TOUR (*Fees all inclusive*)



Today we travel into the old world of the Blue Mountains. Our Tour Guide will greet us at the Glenbrook Visitors Information Centre. Walk where Royalty has walked when we tour through The Carrington Hotel, experience the unique ambience of The Grand Old Lady of

the Mountains as you step through her doors into another time. On leaving the Carrington, we then travel to the Katoomba Golf Club for a two course lunch. After lunch, our Royal tour continues. Hear stories and myths of the Royalty that have visited the Blue Mountains with an afternoon visit to Echo Point.

11 THE 'THREE EXPLORERS' JOURNEY GUIDED TOUR (*Fees all inclusive*)

Travel to Glenbrook for morning tea. Our guide for the day will join us at this point to re-trace this remarkable journey of the Blue Mountains. See a significant section of the original 1813 route in Wentworth Falls, hear accounts from Gregory Blaxland's journal. Lunch at Katoomba Golf Club and then our tour continues with full commentary.

12 ZIG ZAG RAILWAY

Travel to Richmond for morning tea and then it's onto Clarence Railway Station to board the train for a scenic adventure through tunnels, deep cuttings and over magnificent sandstone viaducts. Arrive back to Clarence Station, rejoin the coach and travel to Lithgow for lunch arranged at Lithgow Workmen's Club or, if you prefer, a picnic lunch or fully catered sausage sizzle in the picnic ground at Clarence Station. Travel home with an afternoon stop at The Fruit Bowl at Bilpin.



13 MOUNT BOORALEE ESTATE

Travel to Wentworth Falls National Park for morning tea. Then on via Leura along Cliff Drive to Katoomba and on to Blackheath, to visit Mount Booralee Estate. Your hosts will greet you on arrival for a tour of their spectacular gardens. Then a barbecue lunch will be served in the grounds. Afterwards enjoy a leisurely stroll around the gardens before reboarding the coach for a pleasant drive home through Mount Victoria, Bilpin and Richmond.



14 A DAY IN THE BLUE MOUNTAINS

An early start today for our west bound journey to the Blue Mountains. Morning tea will be at Wentworth Falls National Park before we stop at Leura Village. A light lunch will be served at the Bygone Beautys Tea Room. This is a most fascinating place to visit and browse. In the afternoon we make our way along the Scenic Cliff Drive and visit the Scenic Sky Way (rides at own cost). From there we will travel further west to Mount Victoria continuing across Darling Causeway to Bells Line of Road. Then we commence our journey home via Richmond and Windsor stopping at the Fruit Bowl for a brief break.

15 MOUNT TOMAH BOTANIC GARDENS

Depart your pick-up point and travel to Richmond for morning tea. Join the Bells Line of Road travelling via Bilpin to Mount Tomah Botanic Gardens which are a part of the Royal Botanical Gardens cool climate trees and shrubs. Stay for lunch at the garden restaurant with ample time to roam the rock garden and formal gardens. After a leisurely time in the afternoon, we rejoin the coach for the pleasant drive home via Mount Victoria stopping at Govetts Leap for a brief stop and then returning to your pick-up point.

16 EVERGLADES IN SPRING

Departing your pick-up point, we travel to Leura for a visit to Everglades Gardens, classified by the National Trust. Being met on arrival for a talk on Everglades we then enjoy morning tea in the grounds, then a stroll through the gardens with a variety of cool climate trees and shrubs and also the spectacular views of the Jamison Valley from the lower terraces. After spending the morning at Everglades Garden, we travel to Katoomba Golf Club for lunch. After lunch, we travel to Blackheath for a stop at Campbell's Rhododendron Gardens with more than 1500 rhododendrons, azaleas and a variety of conifers. Then it's homeward bound after a leisurely day in the Mountains.



17 SPRINGTIME IN THE BLUE MOUNTAINS

Departing your chosen pick-up point, we travel into the Blue Mountains. We will stop for morning tea at the beautiful Wentworth

Falls National Park where you will be able to take some photos of the wonderful scenery. From here you will head to Leura Village. Browse through the quaint village and don't forget, if you get a chance, to visit the teapot shop called Bygone Beauties down the side street. Teapots everywhere!! Lunch today is at the Katoomba Golf Club. Then travel to Blackheath for a look at the Campbell's Rhododendron Gardens with more than 1500 rhododendrons, azaleas and a variety of conifers. We rejoin our waiting coach and travel via Mt Victoria to Bilpin for a brief stop at the Fruit Bowl.

The Illawarra stretches from Stanwell Tops in the north to Seven Mile Beach in the south along some of the most spectacular coastline in New South Wales. Along the mountain escarpment to the west lie hidden valleys, rainforest and waterfalls, contrasting with lush green pastures. From the thriving City of Wollongong to historic Shellharbour, through to the seaside town of Kiama, whatever your interests, the Illawarra offers a host of options for your day tours.

1 CITY OF WOLLONGONG

Travel via the picturesque small country town of Camden to Picton for morning tea at the Picton



Botanic Gardens, situated on the banks of Stonequarry Creek. We then continue on to the City of Wollongong, our first stop being the Wollongong Botanic Gardens which is divided into zones each representing a different part of the world. Stay for a picnic lunch or travel

to the Master Builders Club for an all you can eat buffet. After lunch, enjoy a tour of the City and Harbour before following the coastline to Stanwell Tops for an afternoon stop.

2 SCIENCE CENTRE & PLANETARIUM

Travel south to Fairy Meadow for a visit to the Science Centre and Planetarium, starting with morning tea, followed by a tour. The



planetarium is the premier domed sky theatre in New South Wales. The realism of the night sky makes it difficult to believe you are still in the

theatre. There are over 100 hands-on exhibits all designed for interactive use. Leaving Fairy Meadow, travel into Wollongong for lunch at the Illawarra Master Builders Club. In the afternoon we pay a visit to Wollongong Botanic Gardens or a tour of the Wollongong Harbour area taking in Industry World.

3 GRAND PACIFIC DRIVE

Travel south to Stanwell Tops Park for morning tea. Then continue on to enjoy the Grand Pacific



Drive travelling on Lawrence Hargrave Drive taking us over the spectacular Sea Cliff Bridge, built out over the ocean to avoid the unstable cliffs. This incredible engineering feat opened in December 2005 and many hope the "Grand Pacific Drive" down the coast to Wollongong will come to rival the Great Ocean Road in popularity! Tour the coastline to Wollongong for lunch arranged at the Master Builders Club for an all you can eat buffet lunch. We then travel to Mt Sublime Point Lookout for an afternoon stop.

4 INDUSTRY WORLD PORT KEMBLA



Travel south to Sublime Point for morning tea, then onto Port Kembla to the Visitors Centre to meet our guide for the day. Our guide will provide us with a unique and close-up view of the major industries located

around the deep water port of Port Kembla with a history extending back over 100 years. After our 2 ½ hour tour, we then travel to Illawarra Master Builders Club for lunch. After lunch, we travel to Mt Keira Summit Park and lookout for an afternoon stop taking in the views of the coastline below.



5 NAN TIEN BUDDHIST TEMPLE

Today we travel south to Stanwell Tops Park for morning tea then enjoy the Grand Pacific Drive travelling on Lawrence Hargrave Drive taking us over the spectacular Sea Cliff Bridge. This incredible engineering feat opened in December 2005 and many hope the “Grand Pacific Drive” down the coast to Wollongong will come to rival the Great Ocean Road in popularity! We then continue for a visit to the Nan Tien Buddhist Temple for a guided tour of the largest Buddhist Temple in the Southern Hemisphere then travel to the Illawarra Master Builders Club for a buffet lunch. After lunch, we travel via Wingdang and Primbee Bypass with Lake Illawarra on our right, then onto Lake Entrance Road through Oak Flats and rejoin the Princess Highway and home.

6 BLACK DIAMOND HERITAGE CENTRE

Departing your chosen pick-up point we travel to Bulli today for a visit to the Black Diamond District Heritage Centre located in the 1887 railway station building, which has been fully restored. You will be greeted on arrival with morning tea before exploring the centre, which features a signal box room, local railway memorabilia and history displays. After our visit, we rejoin the coach and tour the small townships of the coast, stopping for lunch at Windang Bowling Club. We then tour the sights of Wollongong Harbour before an afternoon stop at the Botanic Gardens.

7 HISTORICAL AIRCRAFT RESTORATION SOCIETY

Departing from your chosen pick-up point, we travel toward Albion Park Rail, stopping on the way for morning tea and arrive at the Australian Historic Flying Museum to view Australia’s early Commercial and Military Aviation Heritage. There are many aircraft in aviation artefacts to explore throughout the museum. After our tour, we head off to Illawarra Master Builders Club for lunch at an all you can eat buffet. After lunch, we visit the Nan Tien Temple for a guided tour of the largest Buddhist Temple in the Southern Hemisphere. Once our tour is complete we make our way back home.

8 SILO’S ESTATE

Leaving your departure point, we travel down the south coast for morning tea at Stuart Park north of Wollongong. Afterwards, we head towards Berry for lunch at the Silo’s Winery



Estate. The estate is a working vineyard and operated from the building used in the original Dairy Farm established in 1870. The premises have been fully restored with award winning Cellar Door winery and restaurant. After lunch, enjoy a tour around the vineyard plus tasting. Then we depart for the trip home feeling comfortable.

9 HMAS ALBATROSS

Travel to Nowra today, first a look at the Sea Venom Jet before visiting the HMAS Albatross - Museum of Flight, Australia’s largest aviation museum. Then into Nowra for lunch at the Shoalhaven Ex-Services Club, an all you can eat buffet. After lunch we travel to Berry to indulge in a tasting of chocolates and jams at the Treat Factory. Also see how confectionery, chocolates and jam are produced on the premises, as well as an old butter factory dating back a hundred years. Then it’s homeward bound.

10 ILLAWARRA MOTORING MUSEUM



Depart your chosen pick-up point and travel to Kembla Grange for a visit to the Motoring Museum for a nostalgic trip into times past amongst a changing collection of cars and motor cycles, signs, bowsers and accessories; also an expanding collection of the earliest typewriters, telephones and office equipment to intrigue you. A country style morning tea will be served on arrival before exploring the museum. Then to the Master Builders Club for an all you can eat buffet lunch and the use of the club's facilities. After lunch, we pay a visit to the Nan Tien Temple for a self guided look at the largest temple in the southern hemisphere before starting the leisurely journey home.

11 FAMILY HISTORY CENTRE – KIAMA

Travel to Kiama, see the famous Blowhole before arriving at the Kiama Family History Centre. Morning tea will be served on arrival, then a guided tour of the Centre containing records dating back to early colonial days. Afterwards, rejoin the coach for a tour of Kiama before lunch at the Group Seven Leagues Club. Head home via Mount Ousley and the Appin Road.



12 CHOCOLATES & WINE

Our first stop is Berry for morning tea. Then a visit to the Treat Factory, situated in an old butter factory. See chocolates, confectionery and jam being produced during your tour, enjoy a tasting and perhaps a purchase. From Berry we travel to Nowra for lunch. In the afternoon, a visit to Coolangatta Estate Winery for a tasting. Rejoin the coach, sit back and enjoy the leisurely journey home along the Coast.

13 THE COCKATOO RUN – ILLAWARRA TO THE SOUTHERN HIGHLANDS



Depart your pick-up point and travel south to Stanwell Tops Beach for morning tea. We then enjoy the Grand Pacific Drive which will take us over the spectacular Sea Cliff Bridge built out over the ocean to avoid the unstable cliffs built in 2005. We then travel to Wollongong Station to board the train known as The Cockatoo Run, climbing 600m over the Illawarra escarpment into the Southern Highlands at Robertson. Leaving the train here, we travel to Moss Vale RSL for lunch. After lunch, we continue through Bowral and Mittagong, then homeward bound.

14 A RIGHT ROYAL & RESTORATION DAY

Today we tour south to the seaside township of Woonona where you are invited to Victoria Manor to have a cuppa with the Right Royal Experience. Janet's Royalty Rooms feature a 20 year collection of Royal Family memorabilia and enjoy a delicious home cooked morning tea of butterfly cakes and boiled fruit cake tea and coffee. After your Royal morning tea we tour via the coast to Wollongong for lunch at an "all you can eat buffet" at the Master Builders Club. Rejoin the coach and head to Albion Park Rail to the Australian Historic Flying Museum to view and tour Australia's aviation heritage. At the completion of the tour we travel leisurely home.

The scenic Central Coast has something for everyone – spectacular waterfalls, lush rainforest and rolling green valleys to the west. With so much to see and do around the scenic Central Coast, the following list is only an insight into the attractions of the area. Contact us now for more information on further wonderful day tours.



1 CENTRAL COAST TOUR

Our first stop is Brooklyn for morning tea. We then travel to Gosford for a visit to the Gosford City Arts Centre and The Gosford–Edogawa Commemorative Gardens with free time to stroll through the traditional Japanese Gardens featuring waterfalls, pavilions, oriental bridges and Koi pavilion. After enjoying the gardens, we follow the coastline to Tuggerah Lakes Memorial Club for lunch. After lunch, we travel via The Entrance to Budgie for an afternoon stop before joining the freeway to home.

2 BROKEN BAY TO THE ENTRANCE GUIDED TOUR *(Fees all inclusive)*

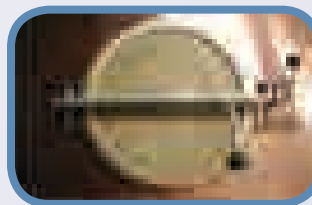
There is no better way to enjoy ‘The Coast’ and experience the beauty and lifestyles of this area than on a guided tour. Today we travel to Gosford where we meet our guide and enjoy a cuppa, before setting off to enjoy the unspoilt beaches of Broken Bay, to the heights of Killcare. Travel to trendy Terrigal and take a browse in the boutiques at Crown Plaza and unwind over lunch at Malabar RSL Club. In the afternoon we travel into the heart of The Entrance to make friends with the pelicans, all with full commentary of the area with your qualified guide.

3 LAKES & LEISURE - THE LAKES DISTRICT OF THE CENTRAL COAST GUIDED TOUR *(Fees all inclusive)*

Collecting our local guide for the day, we set out alongside the Wyong River to meet the huge Tuggerah Lake, then on through the lakeside suburbs of Tacoma, Rocky Point and Gorokan before viewing the famous fishing spots along Budgewoi Lake. See the newly established suburbs around the northern lakes districts and travel on to enjoy views across Chain Valley Bay to the southern reaches of Lake Macquarie. Visit the heritage mining village of Catherine Hill Bay. Travel south with lovely Lake Munmorah views to one side and the stunning Birdie Beach to the other before ‘mooring’ at the twin towns of Budgewoi and Halekulani for lunch at the local bowling club. After lunch, more great views as we make a stop at the beachside village of Norah Head, to the majestic Norah Head Lighthouse, then through the ‘Lakes Way’ travelling via Toukley and Warnervale.

4 DISTILLERY BOTANICA

Today we travel to Gosford for morning tea, then on to Erina for a visit to Distillery Botanica. Take a deep breath at the front gate, relax your mind as we slip into a green and fragrant land, enjoy a stroll in the gardens to take in the fragrance, a tour of the distillery with a tasting of the Australian liqueurs and bush food tasting. From here we travel further north to The Entrance Bowling Club for lunch, then on to Norah Head for an afternoon stop at the lighthouse.





5 PATONGA BEACH FISH & CHIPS

Travel north along the freeway to West Gosford and then follow Brisbane Waters Drive via Point Clare and Koolewong to Woy Woy for morning tea at the Memorial Waterfront Reserve which contains formal garden areas

and picnic facilities. Tour via Ettalong Beach, Umina Beach and Pearl Beach, then to Patonga for lunch from the famous Patonga Seafood of fish and chips, then the leisurely journey home following the eastern side of Brisbane Waters.

6 FIRES CREEK FRUIT WINES & GARDENS

Departing your chosen pick up point, we head north today, stopping for morning tea on the way, before arriving at the Gosford City Arts Centre and Edogawa Commemorative Garden for a morning stroll through the traditional Japanese Garden featuring pavilions, tea house, oriental bridges and Koi pavilion; there is also a gallery featuring works of local artists from time to time. We then tour into Gosford for lunch at the Central Coast Leagues Club, an “all you can eat buffet”. After a filling lunch, we travel to Firescreek Fruit Winery which offers you a diverse, dynamic and exciting new range of wines and provides you with the opportunity to explore the unique flavours of fruits, flowers and herbs. Then it’s time to re-board our waiting coach for the return journey home.



7 GOSFORD A DAY AT THE RACES (Must book 6 months in advance)

Travel to Gosford for a day at the races today. We stop for morning tea along the way before arriving at Gosford Racecourse.



Take a stroll and see the future winners of the day before enjoying a sumptuous gourmet buffet luncheon in the beautifully appointed and fully air-conditioned

Horsewalk Grill. Located in the MJ Cusick Stand, the Horsewalk Grill offers a great view of their racecourse with easy access to tote and bookmaker facilities. Your seat is reserved for the whole day while you enjoy the fun at the races. Rejoin your waiting coach for the leisurely trip home – hopefully with a pocket full of winnings.

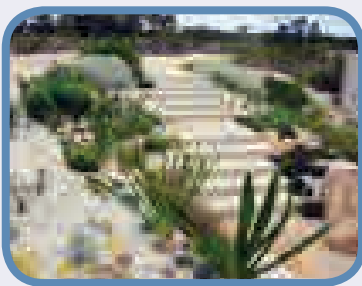
(Please call office for dates.)

8 SCENERY & GREENERY GUIDED TOUR (Fees all inclusive)

Our guide joins us today at Wyong for a journey through the picturesque Yarramalong Valley. Enjoy a ‘real rural morning’ travelling along country roads and through velvet green valleys. Spot grazing farm animals and quaint little villages, hear the story of the ‘Bumble Hill’ people of Yarramalong. See the farmed plateau of Kulnara and Somersby, known as the bread basket area, where you’ll see citrus and summer fruit orchards, horse studs, chicken farms, flower and vegetable farms also the Giant Gynea Lilies – a sight to see. Lunch today is at Central Coast Leagues. Then in the afternoon we tour the scenic hills of Erina Heights with a stop at the ‘Wildflower Place’ where you can just browse or buy from a range of Australian Native flowers and crafts.

9 MT PENANG GARDENS

We travel north to Mt Penang Gardens at Kariong, a contemporary Australian garden showcasing both wet and dry climate gardens. Morning tea will be on arrival in the Waterfall Café overlooking the garden



with magnificent water cascades, then a guided tour of the Garden before free time to explore for yourself. Leaving Kariong, we travel to Gosford for lunch at the Central Coast Leagues Club. After

lunch, we travel further north to Nora Head for an afternoon stop at the Lighthouse to take in the magnificent coastal views, then on via Toukley to re-join the freeway to home.

10 HENRY KENDALL COTTAGE

Today we collect you from your chosen pick-up point. We head north today stopping along the way for morning tea, then



to the Gosford City Arts Centre and Edogawa Commemorative Garden for free time. Stroll through the traditional Japanese Garden featuring waterfalls, pavilions, tea house, oriental bridges and Koi pavilion; there is also a gallery featuring works of local artists from time to time. Leaving the gardens, we travel for lunch at the Central Coast Leagues Club for “all you can eat buffet”. After enjoying the club’s facilities re-board your waiting coach and it’s off to visit Henry Kendall Cottage. Set on two and a half acres with peaceful surroundings, Henry Kendall Cottage was once a home for pioneer poet Henry Kendall.

11 “RIVER DEEP MOUNTAIN HIGH”

Pick-up guide at Hornsby and travel north to the delightful lower Hawkesbury town of Brooklyn for morning tea. Travel on to Mt Penang to visit the Superintendent’s Homestead. Stroll through this heritage home and also the new Central Coast Cricket Museum. Lunch at the Homestead or Central Coast Leagues. We then see stunning views from the Mountains to the Sea from Staples Lookout.

Did you know that coach travel is one of the safest forms of ground transport in Australia?

Give Travelworld a call today!

Merrylands (02) 96821366

There is no special time of year for a visit to the Highlands; each season has its own particular feeling. Summer days are long and warm, autumn is a blaze of colour, winter is crisp and invigorating and spring brings the area to life with the colour of wildflowers and tulips. Rugged mountain ranges, plunging waterfalls, combined with rolling green hillsides reminiscent of the English countryside, blend together to give the Highlands its unique character.



1 ILLAWARRA FLY - TREE TOP WALK (Please Note: this is a walking tour)

Today we travel into the Southern Highlands, our first stop Mittagong for morning tea. Then we tour via Robertson to The Illawarra Fly situated on the edge of the Illawarra Escarpment. The fly is a 500 metres long, 25 metres high elevated tree top walk, nestled amongst the temperate rainforest of the Southern Highlands and offers inspiring views from Shellharbour to Bass Point and Lake Illawarra. After enjoying the thrills and views, reboard your waiting coach and travel into Robertson for lunch at the famous Robertson Pie Shop. After lunch, we tour the highlands with an afternoon stop at Bowral before heading for home.

2 FITZROY FALLS

First stop Berrima for morning tea “step back in time” and take the “two foot tour” of the village. After exploring Berrima, travel via Moss Vale to Fitzroy Falls, a pleasant spot nestled deep in a cool rainforest setting at the northern end of Morton National Park for a barbecue lunch. Then to complete your day in the Highlands, travel via Glenquarry to Bowral for an afternoon stop, then it's homeward bound via Mittagong.

3 JOADJA CREEK – HERITAGE TOUR

Travel today via Mittagong to Joadja Creek. Be greeted on arrival by your hosts for the day, enjoy morning tea and a chance to get to know your guide for the day. After morning tea, the tour of the village and refinery begins. Your guide will bring these fabulous ruins to life describing the cultural, social and industrial history of the valley. Then a country sausage sizzle will be served for lunch after which your guided tour of Joadja continues, taking in the Whisky distillery and the cemetery. Then, leaving the valley, we start the leisurely journey home.

4 HIGHLANDS HERITAGE GUIDED TOUR (Fees all inclusive)



Travel to Mittagong Information Centre where your guide for the day will join the coach. From there travel to Lake Alexandra for morning tea. Today we view the historic buildings in Bowral,

follow surveyor Hoddle's track past Wingecarribee Dam to Kangaloon, East Kangaloon, Robertson, hear stories of the settlements and people to Burrawang stopping at the Old School of Arts, War Memorial and the old store. Hear the story of 'debil-debil' the local Bunyip. On via Wildes Meadow, Fitzroy Falls to Avoca. Follow the Bong Bong Road for the story of the Mittagong Boy's Home. Then onto Alpine to view 'Forest Lodge' one of the first five homes in the Mittagong district and then view and hear the story of the district of Mittagong's best keep secret.

5 BUNDANOON IS BRIGADOON SATURDAY 6TH APRIL 2013 THE 35TH ANNUAL BUNDANOON HIGHLAND GATHERING

We need to depart early today, enabling us to arrive in time for the Street Parade and the 'Opening of the Gathering of the Massed Bands', decorated floats and the marching Clan Societies. Then onto the oval for the opening ceremony and then join in the traditional and not so traditional Highland games including the caber toss, hay toss, kilted races, haggis hurling, egg throwing, water toss and more. There will be Highland dancing demonstrations; you can join in. Pipe band demonstrations and lots of other special events throughout the day. There will be over 100 variety stalls consisting of arts and crafts, souvenirs, Scottish food and goods. There is also Clan Society information, tents on site for those who wish to trace their heritage. The day ends at approximately 4.00pm with a parade of massed pipe bands followed by the Lone Piper. Lunch today is at own cost at many of the food stalls available.



6 GARDENS & WINE

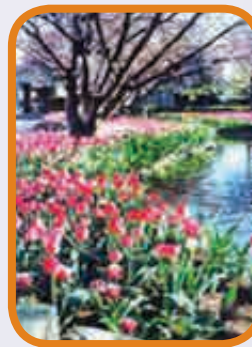
Our first stop this morning is in Mittagong for morning tea before browsing the garden displays. We then travel on the Old South Road in Mittagong for a visit to Greenbrier Park, a national champion garden with an award winning vineyard and cellar door outlet. On arrival we will enjoy a wine tasting before viewing the English style garden set in an Australian woodland and native environment with ponds and streams, sculptures and vistas, making Greenbrier a unique garden setting for a visit. We then travel to Central Hotel for a two-course lunch and a chance to enjoy the Club facilities with an afternoon stop at Corbett Gardens before starting for home.

7 BRADMAN MUSEUM AND BRADMAN OVAL IN THE SOUTHERN HIGHLANDS

Today we are going to the Southern Highlands stopping first at Mittagong Park for morning tea, gateway to the Highlands, travelling via Kangaloon Village to Robertson, then along the Illawarra Highway to Moss Vale for lunch at the RSL Club. In the afternoon, we travel to Bowral to experience the history of Sir Donald Bradman's life in Bowral and relive the great moments and marvel at the achievements of one of our greatest sporting heroes. The museum has film footage, photos and memorabilia that tell the story of The Don, the boy from Bowral. We then head for home.



8 TULIP TIME IN THE HIGHLANDS – 24TH SEPTEMBER – 7TH OCTOBER 2013



Our first stop this morning is Mittagong for our first splash of the Highlands Spring Colour. Morning tea will be served, freshly made scones with tea and coffee

before browsing the garden displays. We then tour the Bowral and Mittagong area, taking in the magnificent spring colours from the comfort of the Coach before travelling to the local club for a two-course lunch. After lunch, we visit Corbett Gardens, the showpiece of the Bowral Tulip Time Festival. Tulip Time has always supported local charities in its 49 year history. The garden will be awash with colour with spectacular display of 100,000 Tulips and 25,000 annuals. The afternoon is free to explore the displays.

9 JOADJA VINEYARD AND WINERY



Departing our chosen pick-up point today, we journey to the Southern Highlands for a visit to Joadja, stopping for morning tea along the way in Mittagong. Joadja is the oldest Vineyard and Winery in the Southern Highlands. Interest in growing grapes in a cool climate led the owners to investigate this high, cool region in the

early 1980's where they recognised the potential of this district for premium grape growing with its cool nights, warm days and extended autumn. Lunch today is a relaxing time at Mittagong RSL with an afternoon visit to Corbett Gardens before homeward bound.

10 HIGHLANDS AND A SPLASH OF COLOUR

Departing your chosen pick-up point our first splash of colour will be at Mittagong for morning tea at Mittagong Park. Our next stop is Quindalup, Quindalup Nursery is recognised as one of the garden gems of the Southern Highlands, a woodland garden of 5 acres filled with rare and unusual trees and shrubs set amongst a backdrop of eucalypts. A short drive along a typical country lane brings you to the garden set in the middle of a 200 acre beef producing property. A specialist nursery adjoins the garden which has an extensive range of rare plants. After exploring the nursery we re-join the coach and travel to Mittagong for lunch at the RSL. In the afternoon enjoy the different colours of the changing seasons from the comfort of the coach as we travel to Braemar Garden World for an afternoon stop and a browse through the gift store and then returning to our starting point.

11 ENGLISH VILLAGES OF THE SOUTHERN HIGHLANDS GUIDED TOUR *(Fees all inclusive)*

Depart preferred pick-up point, travel to Mittagong Visitors Information Centre to meet your guide before proceeding to morning tea at Mittagong Town



Park. Climb the Mittagong Range and follow the ridgeline for wonderful views as we pass many of the stud farms for which the area is famous. Stop in your choice of village and stroll the main street hearing stories of the pioneers of the area or visit a typical country church. This tour travels through very scenic country with little walking. Lunch today is at Mittagong RSL. Then, in the afternoon we include a walking tour of historic Berrima or wind your way through historic Bowral viewing Bradman Oval and the streets where Ginger Meggs was filmed. After enjoying a full day with your guide, we make our way back to your pick-up point.

12 SOUTHERN HIGHLANDS CIRCUIT

Today we are going to tour the area taking in many of the small towns and villages of the Highlands, travelling over Mount Gibraltar to Mittagong, gateway to the Highlands then via Kangaloon to Robertson then on via Wildes Meadow and Fitzroy Falls. Travel then to Moss Vale RSL Club for lunch and in the afternoon travel to Berrima Court House.

Don't see a tour you are interested in?

Build your own or we can build it for you! Call 9632 3344 today.

1 HOPKINSONS COACHES & CAPTAIN COOK CRUISES

(Monday - Friday Only)



Hopkinson's coaches will collect you from your chosen pick-up location and transfer you to the King Street Wharf where you will board the MV Sydney 2000. We will be stopping for a morning tea break along

the way at Pyrmont. Once on board, enjoy being spoilt by the wonderful cruise staff. The Captain Cooks menu features Australia's finest, freshest and most tender prime meats served with market fresh fruits and vegetables. Enjoy million dollar views, quality contemporary Australian cuisine and first class service aboard both Hopkinson's 5 Star luxury air-conditioned coach and Sydney's most prestigious cruise ship MV Sydney 2000. The panoramic viewing windows on every deck present the harbour like a picture postcard, whilst each deck has a covered outdoor area, plus access to the 360 degree open Star Deck. After the cruise, re-join the coach for a Chocolate Hit.

2 THE NEPEAN BELLE & THE PENRITH PLATYPUS

Our day starts at Penrith on either the old world style Paddlewheeler or the brand new state of the art Penrith Platypus. Once aboard, enjoy home style Devonshire Tea whilst cruising the picturesque Nepean River into the Nepean Gorge at the foothills of the Blue Mountains National Park, one of Penrith Valley's natural wonders. After your cruise, we then travel to

Penrith RSL for lunch. Then in the afternoon, enjoy a tour of the Penrith Lakes Scheme.

(Lunch cruises also available)



3 CRUISE THE SEVEN ISLANDS

Travel to Kangaroo Point to join the Hawkesbury Cruises MV Emily Melvey for a three hour cruise. Upon boarding, morning tea will be served.

Cruising past the islands with full commentary taking in Lion, Dangar, Long, Spectacle, Milson and Bar, with maybe an extra one thrown in! Cruise past the water

access-only settlements of the Lower Hawkesbury and see the shipwrecked HMAS Parramatta lying at the base of spectacular sandstone cliffs. Lunch today, the best fish and chips in Brooklyn served on board. Return to Kangaroo Point to join your waiting coach.



4 PALM BEACH FISH & CHIP CRUISE

Our first stop is Newport Beach for morning tea, then to Palm Beach to board the Hawkesbury Palm Beach ferry that travels across Broken Bay to Patonga where your lunch of fish and chips is collected. The ferry then continues to the Hawkesbury River and Cowan Creek to Bobbin Head. Time here for a stroll before boarding your waiting coach and travelling through Ku-ring-gai National Park.



5 BRISBANE WATERS - STARSHIP CRUISES

Travel to Gosford for morning tea before touring to Woy Woy to

be welcomed aboard Starship Cruises the MV Lady Kendall II. Once underway, enjoy cruising scenic Brisbane waters with an entertaining commentary from the Captain. Lunch on board of fish and chips or a terrific buffet. After a three hour cruise we re-join our waiting cruise for the return journey home.

6 BINGO ON THE BOAT



Set off to Sydney to board the Katika for 3 ½ hours of entertainment on Sydney Harbour with the Bingo Boat

entertainment staff including a fun Trivia segment, fun Game Shows and easy listening music, licensed bar and favourite game of Bingo. Enjoy a BBQ and fresh salad lunch on board, during your Fun Boat Cruise.

7 WANGI QUEEN SHOWBOAT

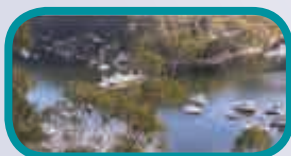
Today we board the Wangi Queen Showboat for a cruise on one of the largest and beautiful lakes in Australia.



Being served morning tea on arrival, settle in and enjoy the Old World charm and comfort that this restored 1922 Showboat has to offer. During the course of your cruise, a Hawaiian smorgasbord will be served. After a wonderful day on the waterways of Lake Macquarie, re-join the coach and travel along the foreshores of Belmont and Swansea heading for home.

8 MACQUARIE PRINCESS

Today we set off for a cruise on the beautiful Hawkesbury River aboard the historic MV Macquarie Princess. Be welcomed aboard by the friendly crew of the Macquarie Princess for our 2 ½ hour luncheon cruise. Be enchanted by the scenery as our skipper keeps us well informed as we cruise to Marra Marra



and Muogamurra Nature Reserve to historic Bar and Milson Islands in the wildest and most picturesque part of the Hawkesbury. See ancient stone carvings and Aboriginal middens.

9 PORT HACKING SCENIC CRUISES

We travel to Gunnamatta Bay this morning to board the Tom Thumb 111 for a cruise on the Hacking River, with its many bays and inlets to the open expanses of Port Hacking and the Bay. Enjoy morning tea on board during your 3-hour cruise with full commentary (lunch of sandwich platters and fruit salad can also be organised). Learn about the early explorers of the district, historical settlements and more. Return to Cronulla for lunch, then travel home via Taren Point and Sans Souci.



10 MACQUARIE PRINCESS MORNING TEA CRUISE

Today we set off for a morning cruise on the beautiful Berowra Creek aboard the historic MV Macquarie Princess including morning tea from Berowra Waters Marina. Surrounded by lush National Parks, we will be welcomed aboard for a 1½ hour cruise. Be enchanted by the scenery as our Skipper keeps us well informed as we cruise Berowra Creek. See ancient stone carvings and aboriginal middens. On our return to the Marina, it's time for lunch at the fish café. After lunch we start for home with a visit to Flower Power, Glenhaven.



11 AQUA QUEEN – CRUISING SYDNEY HARBOUR

Today we travel to Casino Wharf with a stop for morning tea along the way, before boarding the Aqua Queen for a 3-hour cruise on Sydney Harbour. Be welcomed aboard with tea and coffee before a roast lunch and dessert with a glass of wine or soft drink all included, while enjoying commentary by the Captain taking in the sights of Sydney Harbour. Return in the afternoon to your waiting coach to start for home.

12 SHOALHAVEN – DOWN RIVER CRUISE



An early start today as we make our way south to Nowra to board the Christine J. Once aboard enjoy morning tea. During your 3-hour cruise your Skipper delivers an entertaining and informative commentary taking in historic landmarks. You will also enjoy their famous lunch of

fish and chips on board or an option of Bomaderry Bowling Club Lunch. Return to Nowra and your waiting coach for the short journey into Berry for an afternoon stop before starting for home.

13 MILK AND PAPER RUN

This morning we head to the Riverboat Postman on an exclusive cruise, go along and deliver the daily necessities to the residents and holiday makers of the water-access-only settlements on the Hawkesbury River. Included in this is unlimited tea, coffee, biscuits and a locally prepared lunch with a comfort stop at Glenorie/Glenhaven on the way home.

14 MOONSHADOW CRUISES

Depart your chosen pick-up point very early this morning and travel to Wyong for morning tea. We then tour towards Nelsons Bay, the Dolphin Capital of NSW and the gateway to the magnificent Myall Lakes National Park. On arrival in Nelsons Bay, board the Moon Shadow IV and take in the blue water paradise that Port Stephens has to offer.

Lunch today will be at 12.30pm before you enjoy a leisurely 1½ hour cruise with entertainment and informative commentary from your Skipper. Return to the wharf at 3pm to re-join your waiting coach for a leisurely journey home, arriving back to your starting point.



15 AUSTRALIAN HERITAGE FLEET FISH & SHIPS TOUR (Max of 30 passengers)



Travel today to the Maritime Museum for morning tea aboard the 1874 James Craig, enjoy a tour of the ship, see the boats under restoration, marine engine display and maritime art room. Then enjoy a short cruise on the harbour aboard the restored heritage vessel Harman from Pymont Bay Wharf to Rozelle for a visit to the Heritage Ship Yard. See the restoration work underway, and then back aboard the Harman cruising to the Sydney Fish Markets. Then time for lunch at the Fish Markets which the cruise will organise for you. We then tour the City taking in the sights before an afternoon comfort stop heading for home.

16 SHOALHAVEN – UP RIVER CRUISE

An early start today as we make our way south to Nowra. Once aboard, we enjoy morning tea during your 2 hour cruise to Red Rock and return. After a wonderful cruise, we travel to Shoalhaven Ex-Servicemen's Club for a Buffet Fusion Lunch. After lunch, we then head home.

17 NEPEAN BELLE LUNCH CRUISE



Depart your pick-up point and travel to Sweeties Confectionery, then travel to the banks of the Nepean River for morning tea. We then head off to the Nepean Belle for a delicious buffet style lunch as we cruise the picturesque Nepean River.

After your buffet just sit and relax whilst being served your delicious dessert. After lunch, we board your coach for our trip home making an afternoon stop at the Sake Brewery.



18 BAYWATCH CRUISES – JERVIS BAY DOLPHIN EXPLORER – ALL YEAR (Early start)

With a very early start to the day possibly 7am, we travel to Jervis Bay

to board Baywatch Cruises Dolphin Explorer to experience the thrill of sighting Jervis Bay's resident bottlenose dolphins. Relax and enjoy morning tea amidst the unspoilt scenery and sandy bays, history and points of interest. After our mornings cruise we re-join the coach and travel to Nowra for lunch at the Shoalhaven Ex-Servicemen's Club for an 'all you can eat buffet'. After lunch we pay a visit to the Coolangatta Estate for a wine tasting and perhaps a purchase or two and then we start for home.

19 THE HAWKESBURY PADDLEWHEELER LUNCH CRUISE



Depart your chosen pick-up point and travel to Penrith for morning tea and a look at the Penrith Lakes Scheme, then on via Agnes Banks and Richmond to Windsor. Arrive in Windsor to be welcomed aboard the Paddlewheeler for a luncheon cruise, departing from Windsor. Sit back and enjoy the sound of the paddlewheels churning whilst exploring the Hawkesbury River with enlightening commentary. In the afternoon enjoy a tour of the Historic Windsor area before returning to your starting point.

20 PORT HACKING EXPLORER II (Max 36 passengers)

Depart your chosen pick-up point and travel directly to Cronulla Wharf to board the 'Port Hacking'. Explorer II, departing at 10am, for a 4-hour scenic cruise on the waterways of Port Hacking. Morning tea will be served on arrival and then during the cruise your chicken luncheon will be served. Returning back to Cronulla Wharf at approximately 2pm, re-join the coach and enjoy a leisurely tour of the Sutherland area before heading for home.



21 TWILIGHT CRUISING ABOARD THE AQUA QUEEN

Collecting you from your chosen pick-up point we travel this evening to Casino Wharf to board the Aqua Queen for a 3-hour Twilight Cruise on the magnificent Sydney Harbour. Be welcomed aboard with tea, coffee and nibbles before a roast dinner and dessert served with one complimentary beer, red and white wine or soft drinks during your evening meal. Enjoy the evening's commentary by the Captain whilst taking in the sights and lights of Sydney Harbour. Returning to your waiting coach we start for home.

22 NEPEAN BELLE MORNING TEA CRUISE

Depart your chosen pick-up point and travel to Penrith to board the Nepean Belle Paddle Wheeler. Once aboard, enjoy home style Devonshire Tea whilst cruising the picturesque Nepean River into the Nepean Gorge, at the foothills of the Blue Mountains National Park, one of Penrith Valleys natural wonders. Re-joining your coach after your cruise, we travel to St Marys Band Club for a buffet Lunch. Then in the afternoon enjoy a tour of the Penrith Lakes Scheme before visiting Sweeties Confectionary Factory for yummy lollies and chocolates.

23 BRISBANE WATERS CRUISE – CODOCK II

Depart this morning from your chosen pick-up point and travel to Woy Woy stopping for morning tea along the way. Arriving at the Wharf we board the Codock II Ferry for a 2-hour cruise along the waterways. The Codock II was acquired by Cockatoo Dockyard in 1947 and converted to the layout seen today from ships around the Harbour. Today we stop over at the Davistown RSL for lunch. Enjoy a superb two course lunch along with tea and coffee and the club's facilities whilst enjoying some great scenery. After your relaxing or possible winning lunch stopover, board the coach, then enjoy the leisurely journey home.

24 RIVERBOAT POSTMAN HAWKESBURY CRUISES *(Early start)*

Depart your pick-up point with sufficient time to be at Brooklyn Wharf by 9.45am. We board at 9.45am for one of the great river cruises around with Australia's Last Riverboat Postman.



Visit the small isolated river communities along the magnificent Hawkesbury River to deliver their mail. Along the way hear stories and commentary of the river and its history and glide over glassy waters aboard one of our traditional timber ferries and travel part of the longest river on Australia's east coast. The Riverboat Postman takes roughly 3½ hours to complete the trip, with both morning tea and lunch on board. Returning to Brooklyn Wharf to re-join your coach, travel a short journey into Brooklyn for a chance to stretch your legs and take in the views, before the leisurely journey home.

25 CHURCH POINT FERRY



Today we travel via Terrey Hills to Ku-ring-gai Chase National Park, stopping for morning tea at Illawong Bay. We travel through

Akuna Bay and onto Church Point to board the Church Point Ferry for a cruise around Scotland Island and the Western Foreshores, including Lovett Bay made famous by the book 'Salvation Creek' and 'The House'. After our 45 minute ferry cruise, we return to Church Point for lunch at the Historic Waterfront Store right on the water with views of Scotland Island. After lunch, we travel via Mona Vale, Narrabeen and Collaroy to Manly for an afternoon stop before heading for home.

travelworld

Are you planning to travel overseas?
Call Travelworld today!

Merrylands (02) 96821366

1 BURNING LOG CHRISTMAS IN JULY – BULLI, SEVEN HILLS OR DURAL



We make our festive way to your chosen venue from above for the entertaining Burning Log Comedy Theatre Restaurant at your chosen venue to celebrate Christmas In July, featuring a Christmas Variety Show. Enjoy the two course

Christmas luncheon along with the 90 minute Cabaret Variety Show. After laughing your way through the afternoon, re-join your waiting coach and return to your starting point.

2 HUNTER – DAY IN THE VINES WITH A CHRISTMAS TWIST

Depart early this morning from your chosen pick-up point and travel to the Hunter Valley stopping for morning tea. Our first stop today is McGuigan Wines for a tour and taste. Next we are off to the Hunter Valley Cheese Company for a taste of cheeses and browse through the shop. All sorts of goodies await you. For lunch today, we head to Hunter Valley Gardens which is decorated for Christmas and the Christmas Lights Spectacular of a night. You will also be able to purchase your own lunch at leisure. This way, you can choose to wander the gardens before or after lunch. Leaving the Hunter Valley we make our way to Tullochs Winery for a talk and taste. After a full day, re-join your waiting coach, sit back and enjoy a scenic tour back to your point of pick-up.

3 DIGGERS AT THE ENTRANCE

Today we tour via Holgate, Tumbi Umbi, Toowoan Bay and Long Jetty to Tuggerah Lakes for our Christmas in July luncheon at Diggers at The Entrance with sing-a-longs and games with Mrs Claus and a gift for all. Remember, it's full table service at Diggers. *(Monday to Friday)*

4 MANOR HOUSE WINTER CHRISTMAS

This morning we travel to Mt Victoria taking in the scenic views on our tour around this magnificent area and take in some of the most spectacular scenery. Arrive at the Manor House for your winter Christmas experience.

5 HARBOUR NIGHT LIGHTS ABOARD THE AQUA QUEEN – CHRISTMAS CRUISE



Today we travel to Casino Wharf to join the Aqua Queen for a 3 hour Festive Evening Cruise on Sydney Harbour. Be welcomed aboard with tea and coffee before our Christmas dinner is served with all the

trimmings, red and white wine plus soft drinks, all complimentary during your meal, while enjoying the commentary by the Captain taking in the night lights on Sydney Harbour.

(Monday to Thursday - November and December)

6 AUSTRALIAN BUSH CHRISTMAS AT THE WATERVIEW RESTAURANT

Morning tea amongst the gum trees before arriving at the Waterview Restaurant Berowra to celebrate, with Australian Country Songs, Australian style Christmas Carols and also traditional Carols that we know so well. Live entertainment and a chance to dance, good company, laughter and an enjoyable meal, make the best ingredients for a celebration with friends. There are prizes for the audience who participate in a fun day to remember.

(November – December (Monday to Friday))

7 BUSH CHRISTMAS IN WINTER – BUTTAI BARN

Travel north to Buttai Barn for a full day of fun and entertainment. Celebrate Christmas with all the gang at Buttai Barn and their cosy log fires, thousands of fairy lights, Santa and his bell with carols by candlelight. On arrival, enjoy homemade scones, then a traditional baked Christmas lunch followed by delicious plum pudding and brandy sauce plus chocolates from Santa.

Monday to Friday (July-Aug)

8 SYDNEY HARBOUR CHRISTMAS IN JULY, NOVEMBER / DECEMBER ON THE AQUA QUEEN



Today we travel to Casino Wharf with a stop for morning tea along the way, before boarding the Aqua Queen for a 3 hour festive cruise on Sydney Harbour. Be welcomed aboard with tea and coffee before our Christmas luncheon with all the trimmings with red and white wine plus soft drinks all complimentary during your lunch.

You will enjoy the commentary by the Captain while taking in the sights on Sydney Harbour with Christmas music and bon bons. Returning in the afternoon to your waiting coach, we start for home with an afternoon stop along the way.

(Monday to Friday (Nov / Dec will be evening cruise)



9 THE WATERVIEW RESTAURANT BEROWRA 'WINTER CHRISTMAS – THE GREAT GATSBY'

Morning tea along the way before touring via Dural and Galston to Berowra Waters and then onto the Waterview Restaurant to be welcomed for your specially themed Christmas in Winter 'The Great Gatsby' themed on the 1974 movie starring Robert Redford and Mia Farrow. This movie will give us a window into the lives of the elite in the post First World War era, including the fashions, style and opulent lives. The waiters will be dressed accordingly and the décor and music will recreate the era. Remember your package includes red and white wine and soft drinks during your luncheon.

10 DROVERS CAMP LUNCHEON

Today we are going to have the time of our lives for Christmas on Outback Australia. We leave your departure point and travel to Branxton stopping for morning tea on the way. We then travel to Elderslie Road Braxton to the Drovers Camp Restaurant for a fun filled Christmas in July or December. This is an experience of old time Outback Australia. You will feast on Camp Oven food today of hot damper, baked dinner with all the trimmings, scones with jam and cream or damper with treacle. Then we enjoy a 1 hour show of an outback experience. After a great day we head home, touring the area of the Central Coast.



11 STARSHIP CRUISES YULETIDE

Travel to Gosford for morning tea then tour to Woy Woy and be welcomed aboard Starship Cruises vessel the M.V. Lady Kendall II. Once underway, enjoy a festive theme while experiencing expert commentary along the way and see the only place in

the world where five waterways meet at the same place. A delicious Yuletide lunch will be served onboard, including beef, pork and gravy with hot potato bake, salads with hot pudding and custard for dessert and coffee and tea.

12 GABBY'S AT BERRY

Today we head south to Berry with a morning tea stop along the way. Travel to the Treat Factory, situated in an old butter factory. We enjoy a tour and tasting here and maybe even a purchase. Next we spend the rest of the day at Gabby's for our Christmas lunch. Arrive home after an enjoyable day at around 5pm.

13 WINTERFEST IS WONDERFUL AT AUNT MOLLY'S

Collecting you from your chosen pick-up point today we head to Morisset for some winter Christmas cheer. Today there will be lots of entertainment, comedy and sing-a-longs, morning tea with a delicious three course Christmas lunch. Once you are full and cheerful we will enjoy a leisurely drive home.

14 CHRISTMAS IN JULY AT CHAPEL HILL

Today we venture on to Berambing for our Christmas in July luncheon at Chapel Hill. You will be met on arrival by your hosts for the day, enjoy a two course luncheon with festive decorations, a visit from Santa and a Christmas sing-a-long with an entertainer.



15 BUSH CHRISTMAS AT CHRISTMAS BUTTAI BARN

The Buttai Barn's most popular theme day. Join the throng and celebrate with all the gang at the Barn celebrating Christmas at Christmas time with all the trimmings, entertainment, sing-a-longs and laughs.

November – December (Monday to Friday)

16 CHRISTMAS IN JULY ON THE FARM



Today we travel to 'Tobruk Australian Merino Sheep Station' at Maroota. We are greeted on arrival by a Stockmen on horseback before enjoying billy tea and damper at the Drovers Camp around the campfire which overlooks the property with

panoramic views of the Blue Mountains, followed by demonstrations of stockmen on horseback bringing the sheep into the yards with their trusty sheepdogs. We enjoy a true Aussie Christmas lunch prepared by your hosts at Tobruk. Enjoy Christmas Carols before joining in the afternoon activities of whip cracking and boomerang throwing.

Don't see a tour you are interested in?

Build your own or we can build it for you! Call 9632 3344 today.

Hopkinsons

The following tours will have early departures due to the distance of travel required from the various pick-up points.

1 CANBERRA'S SPRING FESTIVAL



Travel to Mittagong for morning tea and your first splash of spring colours then continue onto Canberra going direct to Commonwealth Park and be dazzled by the colour and volume of plantings. Each year there is a different theme portrayed by

stunning floral displays, with stalls, eating places and loads of activities to be enjoyed. Bring your own lunch or purchase your lunch.

2 WINE IN THE VINES

Travel to Wyong for morning tea, then on via Freeman's Waterhole to the Cessnock area, gateway to the Lower Hunter Valley, then arrive at Drayton's Winery for a morning tasting and perhaps a purchase. Travel then to Wyndham Estate, located amongst the vines on the banks of the picturesque Hunter River for lunch. There will be a tour of the estate's cellars before being seated for lunch. During the course of our meal we will sample some of Wyndham Estate's white and red wine range. After lunch, reboard the coach for our third tasting at Kevin Sobels Winery. Having sampled the produce of the Hunter Valley, we return home with a comfort stop at Wyong.



3 FIGHTER WORLD - WILLIAMTOWN

An early start and morning tea on the way to Williamtown to collect our guide at Fighter World Australia's first fighter

aircraft display centre. We have an escorted tour of the RAAF Base before returning to the Museum for some free time to explore the hands on exhibits and unique display of RAAF fighter aircraft. Leaving Fighter World we travel to East Maitland Bowling Club for lunch. We have a brief tour of Maitland before we start for home.

4 MAITLAND GAOL

Travel into the Lower Hunter area, our first stop being Kurri Kurri for morning tea. Then on to Maitland Gaol where you have the opportunity to travel through time with your guides as you hear stories about our colonial and penal history. Be regaled with the stories of convicts, crime and punishment from the prison's 150 year history. After sampling what life was like in a maximum security prison, re-join your coach and travel into Maitland for lunch perhaps at East Maitland Bowling Club or free time to browse and have lunch at the Heritage Mall that offers something for everyone.



5 BUTTAI BARN COLONIAL DAY

Today we travel north for a full day of fun and

activities at Buttai Barn. On arrival we will be greeted with morning tea and there will be lots of fun and entertainment and a Colonial lunch. After a day of fun and enjoyment, farewell your hosts and rejoin the coach for the leisurely journey home.

6 BRADLEY GRANGE BREWERY

An early departure from your pick-up point today, we tour to Goulburn for our first stop Belmore Park in the heart of Goulburn for morning tea and a chance to wander



through the displays. Enjoy a coach tour of the area before we arrive at the Old Goulburn Brewery. This is said to be the oldest surviving brewery and industrial complex in Australia. Here we will have a fully escorted tour and tasting. After our tour, we travel to Goulburn Workers Club for a two course lunch and enjoy the club's facilities. Re-join your waiting coach for the journey home with an afternoon comfort stop if time permits.



7 GOOD SAMARITAN DONKEY SANCTUARY

Very early start today as we head north to the Good Samaritan Donkey Sanctuary

stopping for morning tea along the way. The sanctuary is a 'donkey-friendly' farm of 300 acres nestling in the beautiful Hunter Valley near Dungog at the foot of Barrington Tops. Upon arrival, you will be welcomed and invited to have tea or coffee then stroll over to the donkeys to hear a little about them and the Sanctuary. Lunch is a banquet BBQ. After lunch today celebrity donkeys are brought over to the picnic area for an opportunity to greet and pat, this is nearly always very well received, so do have your camera ready. After your time with the donkeys, re-join your coach and we will make our way back to your pick-up point making a comfort stop on the way.

8 FAMOUS NEWCASTLE TRAM

Depart your pick-up point we join the Sydney to Newcastle



Freeway and travel to Budgewoi for morning tea. Continue along the old Pacific Highway through the southern suburbs into the Newcastle CBD and join the Tram at Newcastle Train Station. Due to the tram's limited numbers we must divide our group. Whilst half are on the tram the other half will visit the Anglican Christ Church Cathedral for a tour, we then change places before going to lunch at the local RSL club. After lunch we tour along the harbour foreshore as we travel to the freeway for our return to Sydney.

9 HISTORIC VALLEY SHOPPING

With an early start we travel to Fitzroy Falls for morning tea. We take a look at the Wingecarribee Reservoir before travelling into Kangaroo Valley for lunch. Time to then look around this quiet village. After a wonderful day, we take a leisurely journey home along the coast.



10 HUNTER VALLEY GARDENS

Nestled amongst the foothills of the Brokenback Ranges in the heart of the Hunter Vineyards

is the now well established Hunter Valley Gardens. The Gardens have plenty to see and do, spread over 25 hectares, with superbly manicured gardens featuring 12 themed 'garden rooms'. Included is a majestic 10-metre waterfall in the sunken garden and an enchanting Storybook Garden to name a few. During your visit, enjoy a 2-course luncheon in the Garden Terrace Café. Also enjoy being captivated by the enchanting Dancing Waters program featuring the world famous Machauer Water Organ, a sight and sound sensation to thrill all.

11 JENOLAN CAVES IMPERIAL TOUR

An early start today as we travel to Jenolan Caves. Our first stop will be Blackheath for morning tea. Afterwards reboard the coach and travel to Jenolan Caves. On arrival, enjoy a guided tour of the 'Imperial Cave'. This cave follows an ancient river passage,



and is mostly level. It is the best cave for visitors who are less mobile.

Some of the Imperial Cave's features include The Sinkhole, Riddleys Shortcut, with a story on how it got its name, Lots Wife, a 2 metre

stalagmite, tall and slim, the Alabaster Column, creamy white calcite and the Crystal Cities, looking like an ancient fortification. As its name suggests, the Shawl Cave is filled with delightful shawls (easy access walking). After the tour enjoy a two course lunch at Caves House. Then reboard the coach and travel to Katoomba for an afternoon stop and a chance to take in the breathtaking view of the Blue Mountains before leaving the Mountains behind on your journey home.

12 DOBELL HOUSE – LAKE MACQUARIE

Departing your pick-up point, we travel north for morning tea at Budgewoi. Then we travel through the lakeside town of Rathmines, which was the site of a Flying Boat Base during World War II. Our tour then continues via the scenic lake drive to the picturesque town ship of Wangi Wangi where we will stop for lunch at the Wangi District Workers Club which is on Lake Macquarie, the largest salt water lake in Australia today. After lunch we visit the famous Australian Artist, Sir William Dobell, for a guided tour of his historic home.



13 LAKE BATHURST

Very early start this morning and we head south to Mittagong for morning tea and comfort stop. Continuing on to Lake Bathurst, we will collect our guide from the Lavender Garden Tea Rooms. This tour can be as short or as long as you wish. You can also have lunch here in the Tea Rooms or shorten the tour and have lunch at the Soldiers Club at Goulburn. After lunch we have a leisurely journey home.

14 RATHMINES – RAAF WWII SEAPLANE BASE

An early departure from your chosen pick-up point, travel to Rathmines for a step back in time and the State Heritage listed RAAF World War II Seaplane Base. On arrival you will have morning tea of scones, jam and cream, cake, tea, coffee and orange juice followed by an introduction about the early history of the area. Take a short stroll to Catalina Memorial then re-join your coach for a tour around the heritage listed buildings still in use today. Once the tour is complete, enjoy a two course luncheon (main meal and dessert) at Rathmines Bowling Club. After your lunch, make the leisurely trip back to your starting point. *(Wednesday to Friday only – Please call for other days.)*



15 A DAY ON THE FARM – ALPACAS AND SHEEP

Today we will travel south to Sutton Forest (Southern Highlands) to visit the Horsham Alpaca Stud. We will be greeted by Patricia, the stud owner, who will provide morning tea. A guided tour will be given by Patricia who will give a full commentary of the care and breeding of alpacas. Our next attraction will take us to Goulburn. Here we will enjoy a guided tour of the city which will include commentary on historic buildings. Lunch will be at Goulburn Heritage Motel. Enjoy and take a browse at the shopping centre. Our last visit of the day will be to the Pelican Sheep Station. Our host will demonstrate the care and keeping of sheep. A shearing demonstration will be provided.

16 BERRIMA & HARPERS MANSION



Travel today to the beautiful Berrima area stopping for morning tea on the way, before visiting Harpers Mansion. This 1834 two storey brick house is an example of an early Australian Georgian Country House and sits on

a couple of acres of cool climate gardens. You will also see a maze in the magnificent gardens which is the only one of its kind in NSW. Then you will have time to explore the town of Berrima before heading off to lunch at Mittagong RSL for a two course meal and the use of the clubs facilities. After a relaxing lunch, we pay a visit to Southern Highlands Winery for a taste and talk. Then it's time to board the coach and make your way back to your pick up point.

17 STROLL DOWN MORPETH TOWN

Today is an early start to the day as we head to Morpeth. Today you can take a long, slow stroll along Swan Street where most of the town's historic attractions are located. Brows the gift shops which includes antique, galleries, lolly shops, a tea house, ginger beer factory and bakeries. Lunch today will be at your own leisure.

18 HUNTER VALLEY TOUR

Nestled amongst the foothills of the Brokenback Rangers in the heart of the Hunter Vineyards is the now well established Hunter Valley Centre. With an early start to the day, we stop for morning tea on the way. We visit Pokolbin's Town Centre, which features boutique specialty shops, restaurants and galleries as well as the Chocolate Company. Enjoy the fully landscaped gardens of the village and don't forget to look at the beautiful Chapel. Next we head to the Wynwood Winery for a tasting, followed by lunch in their beautiful restaurant. After lunch we make an afternoon stop at another local winery, Lindemans or Draytons (depending on availability). After a full day in the Hunter its time to board our waiting Coach for the leisurely journey home.

19 HISTORIC WOLLOMBI



Departing your pick-up point today with an early start allowing for traffic, we travel northbound for a day exploring the historic village of Wollombi and surrounds. We pick up our guide enroute to the village for the start of our guided tour. We stop for morning tea at Wollombi located just 30

minutes south of the Hunter Valley. Our guide will explain and bring to life the old convict road history and some of the amazing tales of survival that happened in this beautiful location. Lunch will be at the stunning Mulla Villa Guesthouse tucked away in mystical Wollombi Valley. Mulla Villa gives you the best of both worlds, the history of the 19th Century with the luxury of today. Mulla Villa is an original 1840 convict built sandstone Magistrate's House set on 100 acres of lush rainforest farmland, and is our location for a delicious sit down lunch. After a very relaxing and delightful experience, we start our drive home.

20 HUNTER REGION BOTANIC GARDENS

Early start as we head to the beautiful Hunter Region Botanic Gardens. On arrival we will have a Devonshire Tea, before enjoying the gardens. The Gardens cover an area of 140 hectares, much of which has been preserved as natural bushland. The original inhabitants of the area were the Woromi Aborigines. The site was managed by the Hunter Water Corporation from 1920 to 1986 when it was leased by the Corporation to the Hunter Region Botanic Gardens Ltd, a non-profit company of volunteers responsible for designing, developing and managing the Gardens. Enjoy a light lunch at the cafe and then continue to enjoy your stroll around the gardens. The Botanical Collections, which are predominately Australia flora, are arranged into a number of Theme Gardens including acacias, Australian plants for the home garden, succulents, banksias, hakeas and grevillea's, plants of the Hunter Region, boronias and their relatives, prostantheras, eucalypts (mostly of the Hunter Region) proteas of South Africa, local water plants, native myrtles, palms, rainforest plants, Australian arid plants, conifers, cycads and ferns.



21 DROVERS CAMP LUNCHEON

Today we are going to have the time of our lives in Outback Australia. We leave your selected departure point and travel to Branxton stopping for morning tea on the way. We then travel to Elderslie Road Braxton for the Drovers Camp Restaurant. This is an experience of old time Outback Australia. You will feast on Camp Oven food today of hot damper, baked dinner with all the trimmings, scones with jam and cream or damper with treacle. Then we enjoy a 1 hour show of an outback experience. After a great day, we head home touring the area of the Central Coast.

NEW SECTION SCHOOL HOLIDAYS IDEAS



1 AUSTRALIAN REPTILE PARK

Departing your chosen pick-up point, we start our travel to Gosford stopping for morning tea at a park to stretch your legs. Once we have arrived at the Australian Reptile Park you can roam around the park at your own pace. There are many things to see and do. You can meet Elvis, the crankiest crocodile in Australia, walk with Hugo, the giant Galapagos tortoise, see loads of cuddly Australian animals, witness venomous snake and funnel web spider milking's and hand feed friendly kangaroos. Once you have seen some of the park you will be hungry and ready for lunch. At the Australian Reptile Park they have on-site cafe and picnic area with free BBQs. Once you have hugged and fed the animals, it will be time to take your tired legs back on the coach for a nice cruise home.



2 HOLE IN ONE

Today we pick you up from your chosen pick-up point and have morning tea at a park along the way. Golf 4 All has three mini golf courses for you to enjoy. The 'Native' and 'Hedge'

courses provide lots of interesting challenges whilst the 'Tropical' course is full of beautiful palms. This course is sheltered with two huge shade sails for protection from the weather and all three courses contain many animated attractions. You can buy lunch at Putt Putt or head into Panthers. After lunch, we can cruise home, count the score and see who wins!

3 TRAINWORKS CHOO CHOO

Today we pick you up from your chosen pick-up point and have morning tea at a park along the way to TRAINWORKS. Children of all ages will find plenty to do at Trainworks!!! Run, jump, spin, climb, watch, operate, explore, enjoy, feel, experience and hear with over 10,000 square metres of lawns. Trainworks is the perfect place to have a picnic for lunch. Grab a delicious sandwich from our cafe or use the barbeque facilities to cook your own hot lunch. Once everyone is ready, we will head home. I am sure the kids will be fast asleep once the coach starts moving after this exciting day.



4 UNDER THE SEA

Today we pick you up from your chosen pick-up point and have morning tea at a park along the way. Come on a journey of amazing discovery through SEA LIFE Sydney Aquarium's unique freshwater and marine aquatic environments and discover an incredible 13,000 animals from 700 different species - including the world's largest variety of sharks and rays. This is a great place to take kids of all years and they will be amazed by the huge sea animals. For lunch, SEA LIFE Sydney Aquarium has a snack bar midway throughout the attraction for paying guests. They also have food outlets in our main foyer or choose to eat at a local café on the wharf. Once everyone is ready we will head home; the kids will be bragging about the aquarium all the way home.

NEW SECTION SCHOOL HOLIDAYS IDEAS



5 SYDNEY OLYMPIC PARK & MOVIE DAY

Today is a nice relaxing day. Once we pick you up from your chosen pick-up point we will stop at the AWESOME playground at Sydney Olympic Park for morning tea and some fun on the equipment.

We will then go to the Reading Cinema in Auburn where we can watch your choice of movie. Once the movie has finished and you have eaten all your popcorn, we can take a nice relaxing drive home.

6 POWERHOUSE MUSEUM

Today we pick you up from your chosen pick-up point and head to Sydney. We will be visiting the Powerhouse Museum, It's unique and diverse collection spans history, science, technology, design, industry, decorative arts, music, transport and space exploration. It is also home to the material heritage and stories of Australian culture, history and lifestyle, providing a comprehensive insight into this rich and diverse country. There is estimated to be well over 500,000 separate items in the Museum's collection. This is a day of adventure and learning. There will be places to eat lunch at own cost in Darling Harbour or feel free to bring your own. After you finish exploring we can head home.

7 WOW LOOK AT THAT !!

Today we pick you up from your chosen pick-up point and have morning tea at a park along the way. We then head to the Kiama Blowhole. This landmark has attracted people to the region for over 100 years was first sighted by George Bass when he anchored his whale boat in the sheltered bay, now known as Kiama harbour. Kiama blowhole has picnic areas and rock pool nearby. Then at the Beach and Bush Cafe, we can buy lunch or enjoy a nice packed lunch from home. After lunch we will enjoy a leisurely drive home and enjoy the scenery.

8 FEATHERDALE WILDLIFE

Today we pick you up from your chosen pick-up point and head straight to Featherdale wild life park. At Featherdale, They have gone out of our way to create a unique wildlife

experience. You can handfeed a kangaroo, wallaby or emu - or enjoy a face-to-face encounter with one of their friendly koalas. They have amongst one of Australia's largest private collections of Australian native animals and bird life. Featherdale's facilities include a Café, souvenir shop and shady picnic areas with BBQ's. Featherdale isn't just a unique Aussie experience. It's unique value too. Once you have seen all the beautiful animals we can head home and share stories along the way.



9 CONTROL THE ACTION

Today we pick you up from your chosen pick-up point and head to Jamberoo stopping on the way for morning tea. What a fun day this will be! At Jamberoo you will surely control the action. There are so many water rides for the whole family to



enjoy, beautiful parks to sit in and relax. Make sure you pack your sun screen because this is a full day in the sun. There are many cafes in Jamberoo to choose from for lunch or pack your own from home. If you're going to do

one exciting trip this summer, THIS IS THE ONE TO DO!! Once you have tired yourself and the kids out you can enjoy a nice peaceful drive home.

NEW SECTION SCHOOL HOLIDAYS IDEAS

10 LET'S SKATE

Today we pick you up from your chosen pick-up point and have morning tea at a park along the way. For this fun ice skating day you will need to dress warm and make sure you have your fun hat on!! Kids will love this trip to Liverpool Catholic Club Ice skating rink. You can also buy lunch at the rink or bring some packed sandwiches from home. After lunch we will enjoy a leisurely drive home.



11 SYMBIO WILDLIFE PARK

Departing your chosen pick-up point we start our travel to Helensburgh, stopping for morning tea at a park to stretch your legs. Once we have arrived at the Symbio Wildlife Park, you can roam around the park at your own pace. There are many things to see and do. The animals here are AMAZING!! Once you have seen some of the park you will be hungry and ready for lunch. You can enjoy a picnic and splash out in their free swimming pools or go along empty handed and buy a snack, refreshments and ice creams. Once you have hugged and fed the animals, it will be time to take your tired legs back on the coach for a nice cruise home.

12 TARONGA ZOO

Once we pick you up from your chosen pick-up point be prepared for a wonderful day at the zoo. This will be a fun day! Once we arrive at the zoo, you can enjoy some drinks and biscuits before you start your journey around the zoo. Lunch today will be at your own cost or you can take your own. We will agree on a time to meet out the front for a nice drive home, sharing stories and photos.

13 THE BLUE MOUNTAINS EXPERIENCE

Departing your pick-up point we travel into the Blue Mountains stopping for morning tea at Wentworth Falls National Park. We then travel on to Katoomba for a chance to take in the breathtaking views of the Three Sisters and the Valley below. After lunch we visit Scenic World, experience the steepest aerial cable car in Australia, Cableway, taking you on a 545 metre ride into the World Heritage listed rainforest of the Jamison Valley. Enjoy the Rainforest Boardwalk to the Scenic Railway Platform, with a return rail ride to the top. Re-join your coach for the leisurely journey back to our starting point.



14 LUNA PARK

Today we pick you up from your chosen pick-up point and head to Luna Park stopping on the way for morning tea. Come on down and have a wander around one of Sydney's favorite icons. Soak up the atmosphere and the magnificent views of Sydney Harbour while the kids enjoy the rides and games, or have a go yourself and re-live your childhood.

Please note: Children must be supervised by an adult at all times.

What's included in your tour package?

- 1 VIP entry to major sights
- 2 Exclusive 'Hidden Gems' sightseeing and unexpected surprises
- 3 Cultural experiences
- 4 Professional expedition leader and local hosts, guides and experts
- 5 Breakfast daily
- 6 Hearty dinners and meal options to suit you
- 7 Exclusive 'You're Invited' dining experiences
- 8 Comfortable accommodation
- 9 All hotel portorage, housekeeping and included meal tips
- 10 Transportation by luxury, air-conditioned and coach with rest room
- 11 Airport transfers

All the must-see highlights

VIP ACCESS

Not only will we promise to take you to all the must-see destinations, you'll also get VIP entry to them. Each new day will bring unmissable highlights that are included in the price of your tour package.

PREMIER DESTINATIONS

No matter where your journey takes you, all of our day and extended tours include must-see highlights such as city orientation tours, sojourns to historical areas, famous icons, luxurious day cruises and scenic National Parks.

Some of our feature destinations include the Opal Fields of Broken Hill, Wentworth Falls National Park in the Blue Mountains, the Victorian Alps in Victoria and a cruise down Sydney Harbour with Captain Cook Cruises.

LOCAL KNOWLEDGE AT HAND

Our expedition leaders are always on board and waiting to share their local knowledge with you and reveal some 'hidden gems' along the way. They are able to provide information and advice during your journey – just ask!

PELICAN FEEDING, CENTRAL COAST, NSW



THE THREE SISTERS, BLUE MOUNTAINS



MANLY BEACH, NSW



ULURU, NT



HUNTER VALLEY WINERIES, NSW



FLORIADE FESTIVAL, CANBERRA, ACT



Want more from your holiday?

Hopkinsons tours offer you the opportunity to “do it your way”. All day and extended tours mentioned in the 2013 planner are fully flexible. Transform your great trip into an unforgettable one!

Customise your package by mixing and matching itineraries, build your own or allow us to build it for you. Call us today on (02) 9632 3344 or email quotes@hopkinsons.com.au to receive a complimentary information sheet.

Tour packages customised to suit your needs

We've taken on board your feedback and customised our tours to reflect what our customers have experienced and absolutely loved.

Best of all, we've pre-negotiated amazing prices for you.

As well as our must-see highlights, you'll have ample opportunity to get out and explore on your own.

Make the most of your free time by visiting one or more of your favourite sights or simply take time out to relax in your new surrounds. It's up to you!

Fully Flexible

Let us tailor-make an itinerary to suit your group requirements with our optional experiences. Additional add-ons include hot air ballooning over outback Australia, scenic helicopter flights over Uluru and sunset camel rides on Cable Beach.

Optional Add-ons

To find out what optional experiences are available to you, simply read through the itineraries or direct your enquiries to (02) 9632 3344 or email quotes@hopkinsons.com.au.

We offer a wide range of extend tours visiting places including:

- › Armidale
- › Gloucester
- › Batemans Bay & Surrounds
- › Bright & Victorian High Country
- › Coffs Harbour & Surrounds
- › Gold Coast Spectacular Tour
- › The Grampians & Mount Gambier
- › The Great Ocean Road & Victorian Goldfields

EXPLORE THE DEEP BLUE, SCUBA DIVING ON THE GREAT BARRIER REEF



STROLL ALONG SURFERS PARADISE BEACH, GOLD COAST, QLD



TAKE A SCENIC FLIGHT OVER THE OUTBACK, ALICE SPRINGS, NT



SINK A HOLE IN ONE AT CATALINA GOLF COURSE, BATEMANS BAY



- › Mildura & Mungo National Park
- › Queensland, Top End & Red Centre

- › Queensland Outback Tour
- › Oberon & Surrounds

We have over 70 Extended Tours to choose from OR build your own. See overleaf for more details.

SPECIAL PRICING FOR 2013. PHONE US ON (02) 9632 3344 TO FIND OUT MORE TODAY!!



1 3 DAY CANBERRA TOUR

Today we depart Sydney for three days and two nights of Federalism. We start by stopping at the big Ram, travelling around a lake, passing through a small historic village, looking up at the stars, back into Limestone Plains to climb a tower, view representative residents of different countries, the flag walk along the lake, cruise the Southern Cross, pay tribute at the Last Post, stop at the Police Memorial, plus other highlights.

2 4 DAY MUDGEES BATHURST OBERON TOUR WINE-GOLD-HOUSES-GARDENS

Today we depart Sydney for an exciting and scenic four-day tour taking in the majestic Blue Mountains with one night in Mudgee or Gulgong, two nights in Bathurst, a true country pottery shop, winery, walk the walk of history, Bee Happy, Gold history, special houses and people and the Garden of Love.



3 5 DAY YOUNG TOUR

Depart Sydney on a five-day tour of the south western region of NSW with four nights stay in Young. Travel past wheat and canola fields plus sheep and cattle breeding properties. Stop to view the birth place of Sir Donald Bradman, an old flour mill for licorice, a haunted mansion, a local winery, a castle, see special gardens, an Air Museum, hear the history behind the White Australia Policy plus the story behind specialized glass making, as well as other interesting highlights.



4 7 DAY LAKES ENTRANCE & HIGH COUNTRY TOUR

Depart Sydney on a 7 day tour of breathtaking ocean views, high mountains, deep valley's and Historic Villages. One night Eden, 3 nights Lakes Entrance, 1 night Bright and 1 night Albury with outstanding destinations, highlighting historic villages, Killer Whale Museum, Ocean Headlands, Lake Cruise, the Victorian Alps, the Owens Valley, plus more.

5 4 DAY HUNTER VALLEY CESSNOCK TOUR

Today we depart Sydney for a fun filled informative 4 day tour, 3 nights in Cessnock. We start with becoming a jail bird, escaping to a winery, with the possibility to become a gardener, a star jockey, an olive grower, a Licensee, sweets maker, a good Samaritan, tour guide, can you imagine yourself being one of these people. Imagination is a great equalizer.

SPECIAL PRICING FOR 2013. PHONE US ON (02) 9632 3344 TO FIND OUT MORE TODAY!!

6 5 DAY EDEN TOUR



Today we depart Sydney for our five day tour of the Sapphire Coast of southern NSW. Stay in Eden for four nights. Visit the Tooth family estate, have a BBQ on top of the Great Dividing Range, look at small villages that

dot this mountainous region, a lake cruise, Boyds Tower, Green Cape Lighthouse, historic village and winery, Aussie Rock, Mogo and Cliff Bridge.



7 9 DAY OUTBACK BROKEN HILL & WHITE CLIFFS TOUR

Depart Sydney with tour features highlighting the Blue Mountains, towns of the Western Plains and the Outback. Spend two nights in Cobar, four nights in Broken Hill, one night in White Cliff and one night in Gulgong. Experience the major attractions of this vast and stark landscape highlighting the School of the Air, the Flying Doctor Service, the Jack Absalom and Pro Hart Galleries, a mine tour and Menindee Lakes. Also experience underground accommodation in the opal fields and the harsh working conditions. Learn the importance of windmills, gold and wine. Enjoy a night at the Opera, and more.



8 15 DAY WESTERN AUSTRALIA TOUR

Featuring the West Coast and the South Eastern Corner. Wildflower Season Aug/Nov subject to weather. Fly Sydney to Perth (*airfares not included*).

Be met at Perth Airport with a City Tour including Kings Park. Experience next day the highlights and breathtaking scenery of places like Wave Rock, the history behind Coolgardie and Kalgoorlie, the Flying Doctor Service, an open cut gold mine, fields of golden wheat, Thistle Cove, Pink Lake, Bluff Knoll Lookout in the Stirling Ranges, the Natural Bridge, Whaleworld, The Gap, Tingle and Karri Trees in the Valley of the Giants, a tree top walk, the Gloucester Tree, Cape Leewin Lighthouse, Margaret River Winery, the Mammoth Cave, historic Fremantle and a Swan River cruise, Yanchep National Park for an Aboriginal Culture experience, The Pinnacles, Hamelin Pool for the Stromatolites, Monkey Mia, Shell Beach, Kalbarri National Park for Red Bluff Lookout and New Norica plus much much more. We have three nights in Perth, one night in Fremantle, two nights in Kalgoorlie, one night in Esperance, one night in Albany, two nights in Margaret River, one night in Geraldton, two nights in Monkey Mia and one night in Kalbarrie. Fly out of Perth or travel by the Indian Pacific for the return to Sydney. Travel can be organised.

Conditions of Carriage for G.R Hopkinson (Transport) Pty Ltd

G.R. Hopkinson (Transport) Pty Ltd is not a common carrier and reserves the right to refuse to carry any person or their luggage without assigning a reason therefore. In addition, the following conditions apply to all passengers without exception.

General Conditions

The Company, and or their agents, will not be liable for any accident, injury or death or any passenger, nor loss or damage to personal effects or luggage, irrespective of the conditions from which such accident, injury, death, loss or damage may have arisen.

The Company, and or its agents will not be responsible for any inconvenience, or loss occasioned to delays to services and additional cost of accommodation, transport and associated expenses and this does include adverse weather.

The company, and or its agents reserve the right to cancel, vary or substitute any service in any way for any reason deemed necessary.

The company, and or its agents, reserve the right to refuse carriage of any person on any service and to remove any person from any service for any reason or in the interest of other passengers.

No guarantee, express or implied attached to any motor vehicle owned by, leased by, or operated for the company, nor can the operator or its agents accept liability for any loss, delay, cancellation of service, death or irregularity that may occur to be occasioned by any cause whatsoever and it is expressly agreed that all bookings are made and accepted under these stipulations and conditions.

Timetables and fares and intended Itineraries are subject to alteration without notice, to accommodate operational requirements and meet Industry Legislations where required.

Meals or refreshments are provided by 3rd parties on all day tours. It is the responsibility of each passenger to ensure dietary requirement information is passed on to caterers or venues on a case by case basis. Where possible G.R. Hopkinson (Transport) Pty Ltd will assist with this, however we accept no responsibility for such information being relayed to the 3rd party provider.

All travel purchased on any G.R. Hopkinson (Transport) Pty Ltd service or code shared service is Non Refundable.

A change of travel date and or service (transfer) requires a minimum of 72 hour's notice, from the original travel date and time.

For safety reasons certain goods or articles cannot be carried, such as weapons, explosive goods and flammable items.

Seat allocation requests are not guaranteed. Due to safety requirements G.R. Hopkinson (Transport) Pty Ltd requires any passenger travelling with a wheelchair, must be accompanied by a carer or escort at all times.

G.R. Hopkinson (Transport) Pty Ltd has arrangements with other carriers known as "Code share". This means that even if you have made a reservation with G.R. Hopkinson (Transport) Pty Ltd and hold a ticket for a G.R. Hopkinson (Transport) Pty Ltd advertised service, you may travel with another carrier.

All advertised discounted fares, are subject to availability and therefore are not guaranteed.

Amendments

Any amendments to your booking after confirmation can only be accepted subject to availability. Hopkinson's reserves the right to charge an amendment fee in respect of any change to your booking in addition to any other applicable charges in relation to the amendment.

Cancellations (Day Tours, Extended Tours, Charter Work)

In an event that you cancel your booking, Hopkinson's reserves the right to charge a cancellation fee as follows:

Bookings cancelled greater than 7 days prior to travel: up to 25% of the value of the booking.

Bookings cancelled between 4 days prior to travel and the day of travel, but not on the day of travel: up to 50% of the value of the booking. Bookings cancelled on the day of travel: up to 100% of the value of the booking.

In addition to any cancellation fee charged by Hopkinson's you will also be responsible for payment of any charges levied by suppliers in respect of the cancelled booking. In all cases the total fee charged will not exceed the value of the booking.

Credit Card Charges

In the event of payment via credit card, Hopkinson's will charge an additional fee of up to 3% of the value of the booking according to the type of credit card used.

Deposit and Final Payment

Hopkinson's require the payment of 25% deposit to confirm a booking. The balance of any amount due will be payable in full no later than 4 days prior to the date of travel. Non Account customers may be charged a bond (which will be refunded upon return of a clean tidy and undamaged vehicle).

Extensions

You are responsible for any charges levied by suppliers in respect of extra time in the event that your booking does not run to schedule. This includes any extra charges levied where you choose to extend the duration of your booking and include charges for flight and/or traffic delays.

Liability

Hopkinson's has no liability for any act, omission or default, whether negligent or otherwise of any supplier. We have no liability for any loss or damage occasioned by the negligence, act or omission of any supplier or other third party. In circumstances where liability cannot be excluded, such liability is limited to the value of the purchased travel arrangements.

Quotation

Prices are current at the time of quotation and subject to availability at the time of booking. All quoted prices include GST. Hopkinson's reserves the right to pass on, without notice, any increases that may occur in any applicable airport charges, road tolls, entry fees or parking charges.

Luggage

The Company accepts no liability for lost or damaged luggage. The company recommends that sufficient luggage insurance be obtained. Limit of 2 suitcase, not to exceed 20kg and a small carry bag, not to exceed 5kg. Each item must be clearly marked with your full name, address and contact number. Luggage exceeding the allowable limit, or any boxed item will be considered freight and charged accordingly. Excess luggage, surfboards, bikes or freight not guaranteed to depart on requested service, may be held for next available service.

Food, Alcohol, Smoking & Drugs

Australian Federal and State Government Regulations prohibits the consumption of any food on board our Coaches. Smoking, the consumption of alcohol and the conveyance or ingestion of illicit drugs on coaches is also strictly forbidden. Passengers under the influence of alcohol or illicit drugs will not be permitted to board the coach.

Dress Requirements

A reasonable standard of clean clothing and footwear is required.

Departure Times

Passengers must be at the pick up location at least 15 minutes prior to departure, whether at a Passenger terminal or en route. Failure to do so may result in missing the Coach, which will result in 100% loss of payment. The Coach will NOT wait at any pick up / departure point beyond the scheduled departure time.

Children

All minors under the age of 13 years must be accompanied by a chaperon aged 16 or over. A Parent / Guardian Authorisation form must be completed for all unaccompanied minors between 13 and 16 years of age. Children 2 years and over will be charged the applicable child rate with a confirmed seat. Children under 2 years of age may travel free of charge if accompanied by a full fare paying adult. Should a child under the age of 2 years require a seat, the applicable child rate will be charged for.

Travel Insurance

Travel insurance is highly recommended when making all travel arrangements.

Hopkinsons

...More than just another coach company



Contact Us

125 Woodpark Rd, Smithfield NSW 2164

P.O. Box 12, Merrylands NSW 2160

Phone: (02) 9632 3344

Fax: (02) 9632 4402

G.R. Hopkinsons (Transport) PTY LTD

Email: quotes@hopkinsons.com.au

Tours are available online at:

www.hopkinsons.com.au

Senior Tour Groups

Please phone: 1300 363 030

OR email: quotes@hopkinsons.com.au



ABN 58 000 523 615 | Licence No 2TA 001 891